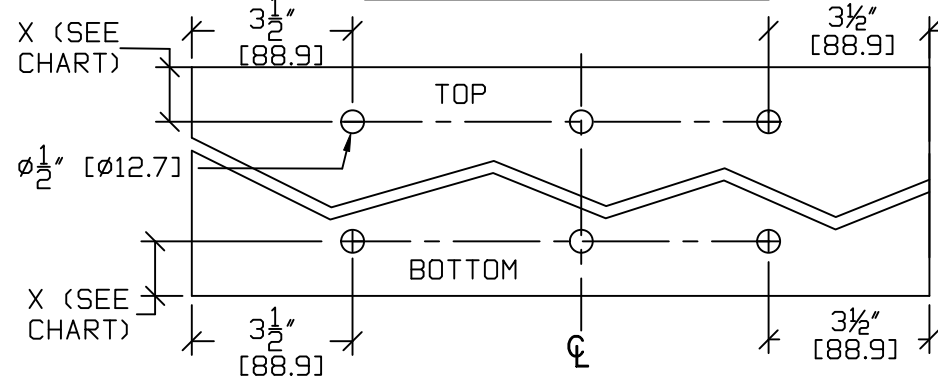


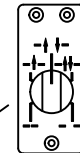
LH SHOWN (RH OPPOSITE)
EXTERIOR ELEVATION

ACTIVE LEAF GLASS PREP

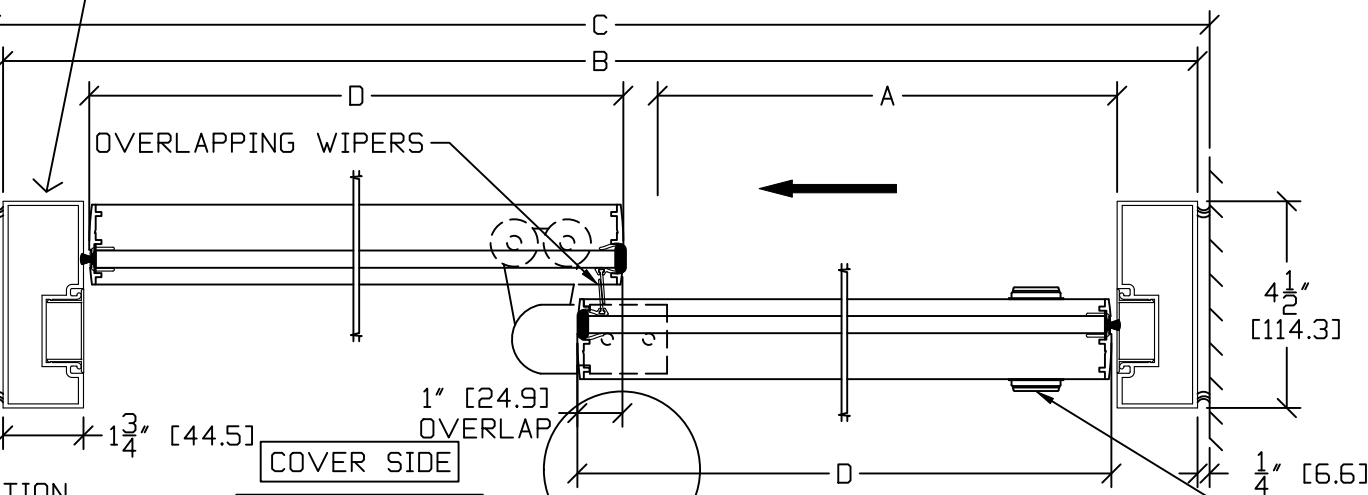


* Hole Placement to be within 1/16"
* Dowell surface may require
modification

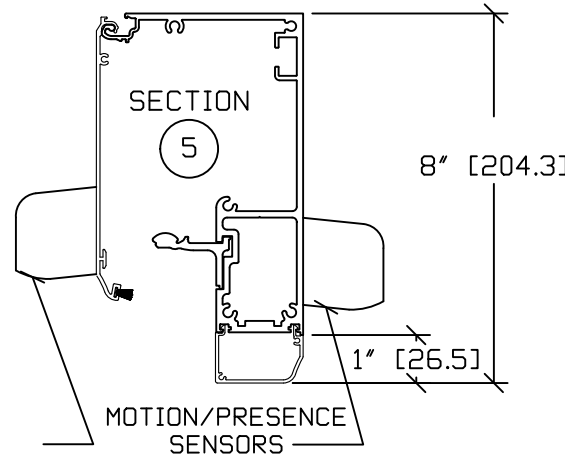
Optional Factory Prep
Switch Location @
74-1/2"H



GLASS WIDTH	X
3/8"	1 9/16" [39.7]
1/2"	1 1/4" [31.75]*



NOTE: PACKAGES WITH TRANSOM MUST HAVE OVERHEAD SUPPORT BY OTHERS.



COVER SIDE
BREAKOUT SIDE

SECTION 1
HEADER

HEAT STRENGTHENED
SAFETY GLASS
(TEMPERED)

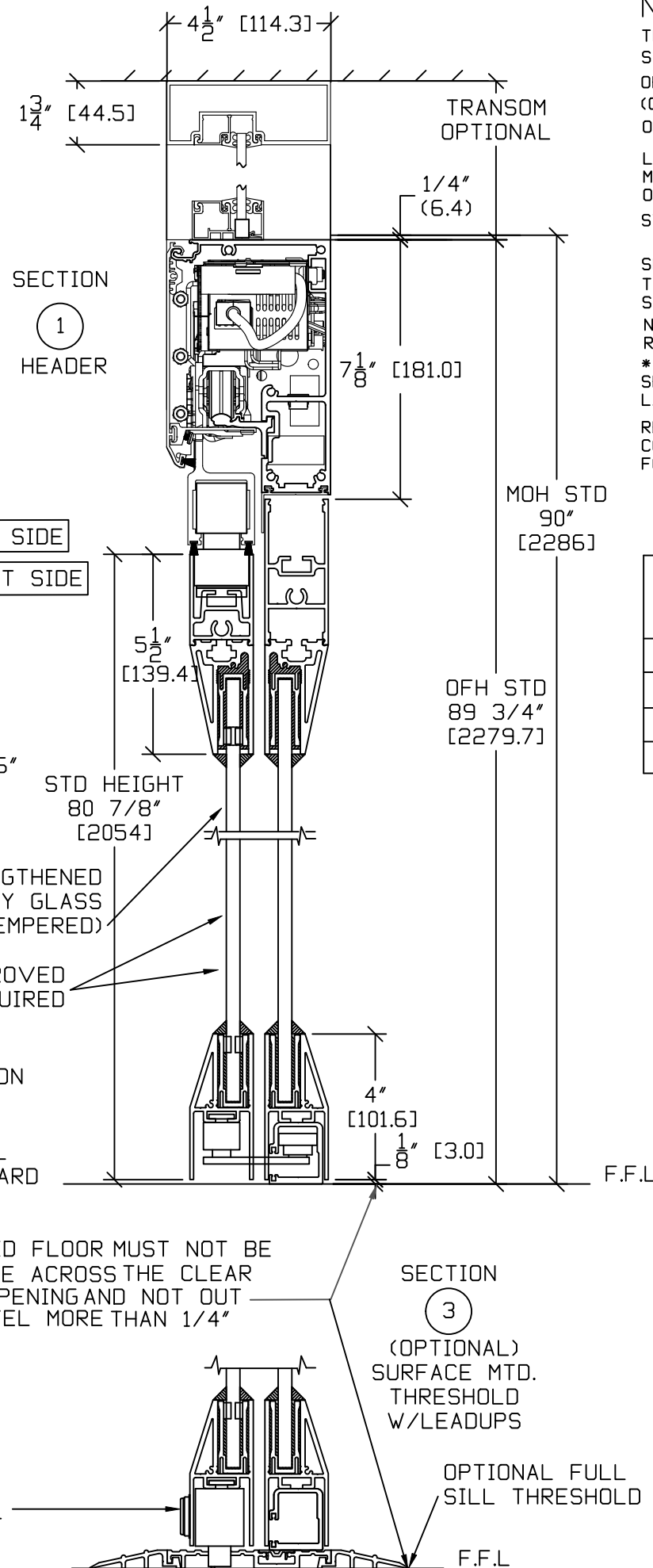
ASTM APPROVED
SEALEANT REQUIRED

SECTION 2
SILL
STANDARD

FINISHED FLOOR MUST NOT BE
CONCAVE ACROSS THE CLEAR
DOOR OPENING AND NOT OUT
OF LEVEL MORE THAN 1/4"

SECTION 3
(OPTIONAL)
SURFACE MTD.
THRESHOLD
W/LEADUPS

OPTIONAL FULL
SILL THRESHOLD



NOTE: THE STANDARD PACKAGE CONSISTS OF:
THE AUTOMATIC OPERATOR & WEATHERSTRIP. FRAMES. DOORS &
SIDELITES WITH VERTICAL WEATHERSTRIP, EMERGENCY BREAKAWAY
OPTIONAL POSITION SWITCHES (DIGITAL (3 OR 5) OR KEY (5)),
(OFF-EXIT ONLY-AUTO-REDUCED OPENING-HOLD OPEN OR
OFF, AUTO, HOLD OPEN) AND MOTION/PRESENCE SENSORS.

LOCKING DEVICES ARE AVAILABLE AS AN OPTIONAL EXTRA:
MANUAL AS SHOWN, MOUNTED IN BOTTOM OF ACTIVE LEAF;
OR AUTOMATIC (NOT SHOWN), MOUNTED IN OPERATOR HEADER.

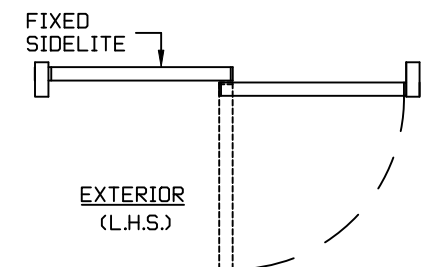
STANDARD FINISH: CLEAR- AA-M12C22A41, CLASS 1, .018 MM.
DARK BRONZE- AA-M12C22A44, CLASS 1, .018 MM.

SPECIAL FINISHES ARE AVAILABLE.
THIS PACKAGE WILL ACCEPT 3/8" OR 1/2" HEAT STRENGTHENED
SAFETY GLASS.

NOTE DRAWING IS DIMENSIONED IN BOTH ENGLISH AND METRIC
REF. AS FOLLOWS 1" (25.4) ALL METRIC SIZES ARE MILLIMETERS.
* FOR MAXIMUM CURRENT DRAW PER OPERATOR, SEE PRODUCT
SPECIFICATION, INSTALLATION INSTRUCTIONS, OR THE UL
LABEL ON THE EQUIPMENT.

REFER TO RELEVANT (LOCAL, STATE, NATIONAL OR AHJ) BUILDING
CODE FOR MIN DOOR HEIGHT & MIN/MAX WIDTH ALLOWABLE
FOR EGRESS REQUIREMENT IN CONJUNCTION WITH TABLE BELOW.

OFW	DOOR OPENING A	OVERALL FRAME WIDTH B	MASONRY OPENING WIDTH C	ACTIVE & SIDELITE LEAF WIDTH D
7	34 3/16" (868.4)	84" (2133.6)	84 1/2" (2146.3)	40 5/8" (1031.9)
8	40 3/16" (1020.8)	96" (2438.4)	96 1/2" (2451.1)	46 5/8" (1184.3)
8-6	43 3/16" (1097)	102" (2590.8)	102 1/2" (2603.5)	49 5/8" (1260.5)
KEY	B/2-7 13/16 (198.4)	C-1/2" (12.7)	B+1/2" (12.7)	B/2-1 3/8 (34.9)



DWG NO. 1010470											
DRN BY	CLW	DATE	6/4/13	CHK BY	SS	DATE	6/4/13	REV.	5.0	DATE	01/18/22