

ASSA ABLOY

ASSA ABLOY Entrance Systems  
1900 Airport Road  
Monroe, NC 28110  
Phone: 1-866-237-2687  
specdesk.na.entrance@assaabloy.com

ASSA ABLOY RD3L - 18  
3 WING  
REVOLVING DOOR SYSTEM  
PLAN VIEW

NOTES:

MODEL: RD3L - 18'

GENERAL CONTRACTOR IS TO ENSURE THAT THE FLOOR IS CONSTRUCTED LEVEL AND FLAT TO WITHIN 1/4" THROUGHOUT THE REVOLVING DOOR AREA. THIS DOOR IS TO BE MOUNTED ON TOP OF THE FINISHED FLOOR SYSTEM, ADDITIONAL SHIMMING OF THE DOOR SYSTEM MAY BE NECESSARY IF THE FLOOR IS NOT LEVEL, OR IF THE DOOR SYSTEM IS TO BE BUILT ON A SUB FLOOR SYSTEM. THE OUTSIDE WALL PANELS ARE FIXED DIRECTLY TO THE FINISHED FLOOR. NO FLOOR FRAME OR RECESSES ARE REQUIRED FOR THIS DOOR WHEN ERECTED ON A LEVEL FINISHED FLOOR. THE FLOOR CONSTRUCTION IS TO BE DESIGNED TO WITHSTAND THE FOLLOWING LOADS THROUGH THE OUTSIDE FIXED PANELS. THE DOOR SYSTEM WEIGHT IS APPROXIMATELY 4000 LBS WHICH IS EVENLY DISTRIBUTED UNDER THESE OUTER WALL PANELS.

STANDARD OPERATING FEATURES:

- \* 1 MICRO PROCESSOR CONTROL UNIT.
- \* 2 HANDICAPPED- PUSH TO SLOW- SWITCHES.
- \* 5 PROGRAMMABLE OPERATION MODES
- \* 4 ACTIVATION MOTION SENSORS
- \* 1 EMERGENCY STOP SWITCHES
- \* 2 EMERGENCY ESCAPE PUSH BUTTONS
- \* 1 SURFACE MOUNTED DIGITAL PROGRAMMING DEVICE PCD
- \* 1 DIAGNOSTIC DIGITAL DISPLAY UNIT
- \* 1 WHITE LAMINATED ROTATING CEILING SYSTEM (IN 12 SEGMENTS).
- \* 12 QUARTZ HALOGEN RECESSED LOW VOLTAGE CEILING LIGHTS
- \* 1 PROGRAMMABLE REAL TIME OPERATING CLOCK SYSTEM
- \* 1 PROGRAMMABLE DOOR OPERATION ACCESS CODES
- \* 1 MASTER KEY SHUT OFF SWITCH FOR LOCK OUT USE
- \* 1 RS-232 COMPUTER ACCESS PORT FOR REMOTE OPERATION AND TROUBLESHOOTING.
- \* 1 600 EVENT MEMORY STORAGE SYSTEM. SHOWS LAST 600 EVENTS OF OPERATION
- \* 1 LOCKING OF THE DOOR BY MAGNETIC BRAKE SYSTEM
- \* 2 ACTIVE DYNAMIC BRAKES.

STANDARD SAFETY DEVICES

- \* FIRE ALARM INTERFACE CIRCUIT - REQUIRES NORMALLY CLOSED DRY CONTACTS
- \* UPS BATTERY SYSTEM THAT CYCLES THE DOOR TO THE EMERGENCY EGRESS POSITION DURING POWER FAILURE.
- \* VERTICAL SAFETY DEVICES
  - 3EA. TIME OF FLIGHT SAFETY SENSORS.
  - 2EA. PDR SENSORS MOUNTED IN THE FIXED CEILING RING AT RIGHT SIDE OF DOOR OPENING
  - 3EA. COMPRESSIBLE SAFETY SWITCHES ON THE OUTER EDGE OF THE ROTATING WINGS
  - 1EA. FIRE ALARM INTERFACE REQUIRES NORMALLY CLOSED DRY CONTACTS
- \* HORIZONTAL SAFETY DEVICES
  - 6EA. COMPRESSIBLE SAFETY SWITCHES ON THE BOTTOM EDGES OF THE WING DOORS
  - SELF MONITORING (CONSTANT) OF SAFETY SYSTEM BY THE MICROPROCESSOR CONTROL MPU

\* POWER REQUIREMENTS

- (1) 220 VAC 20 AMP 60 HZ DEDICATED CIRCUIT FOR DOOR OPERATION AND CONTROLS.
- (1) 120 VAC 20 AMP 60 HZ DEDICATED CIRCUIT FOR LIGHTS.

\* GLAZING

- 7/16" CLEAR CURVED SAFETY LAMINATED FOR FIXED OUTSIDE WALLS.
- 1/4" CLEAR FLAT SAFETY LAMINATED FOR ROTATING DOORS

\* OPTIONAL FEATURES

- MANUAL (NIGHT CLOSING) EXTERNAL DOOR, RIGHT OR LEFT HAND CLOSURE.
- MID RAILS.
- COMPACT FLOURESCENT LIGHTS OR L.E.D.'S

\* MATERIALS

- ALL ALUMINUM PROFILES TO BE .125" THICK (NOMINAL THICKNESS).
- ALUMINUM EXTRUSION SYSTEM USED THROUGHOUT
- ALL CURVED SECTIONS ARE STRETCH FORMED

\* FINISHES

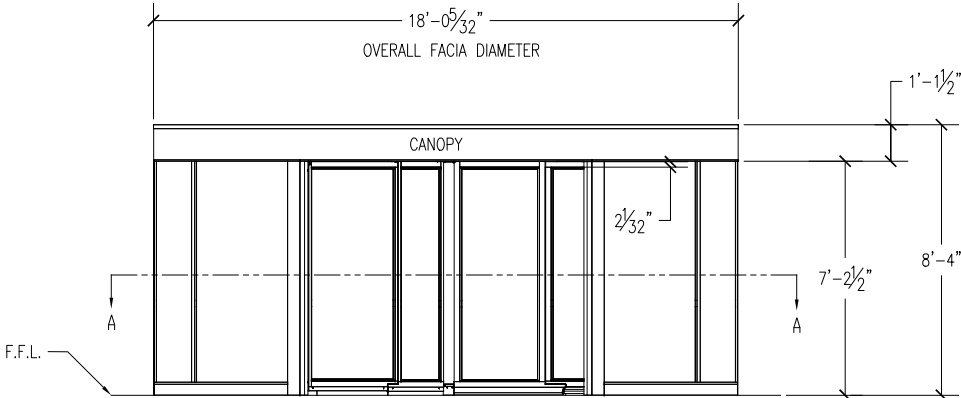
- \_\_\_ CLEAR ANODIZED, \_\_\_ DARK BRONZE ANODIZED, \_\_\_ RAL POWDERCOAT PAINT.
- \_\_\_ POLISHED STAINLESS STEEL CLAD OR \_\_\_ #8 MIRROR OR \_\_\_ #4 SATIN.
- \_\_\_ KYNAR PAINT # \_\_\_\_\_. \_\_\_ OTHER \_\_\_\_\_.

DWG NO.	1018273-RD3L-18 PLAN			SHEET	1	OF	2
DRN BY	R.O.W.	DATE	4/13/10	CHK BY		DATE	5/3/18

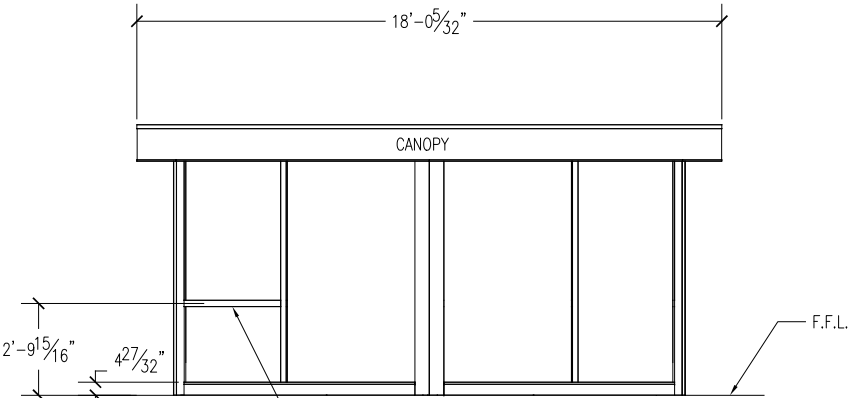
ASSA ABLOY RD3L - 18'  
3 WING  
REVOLVING DOOR SYSTEM  
PLAN VIEW

ASSA ABLOY

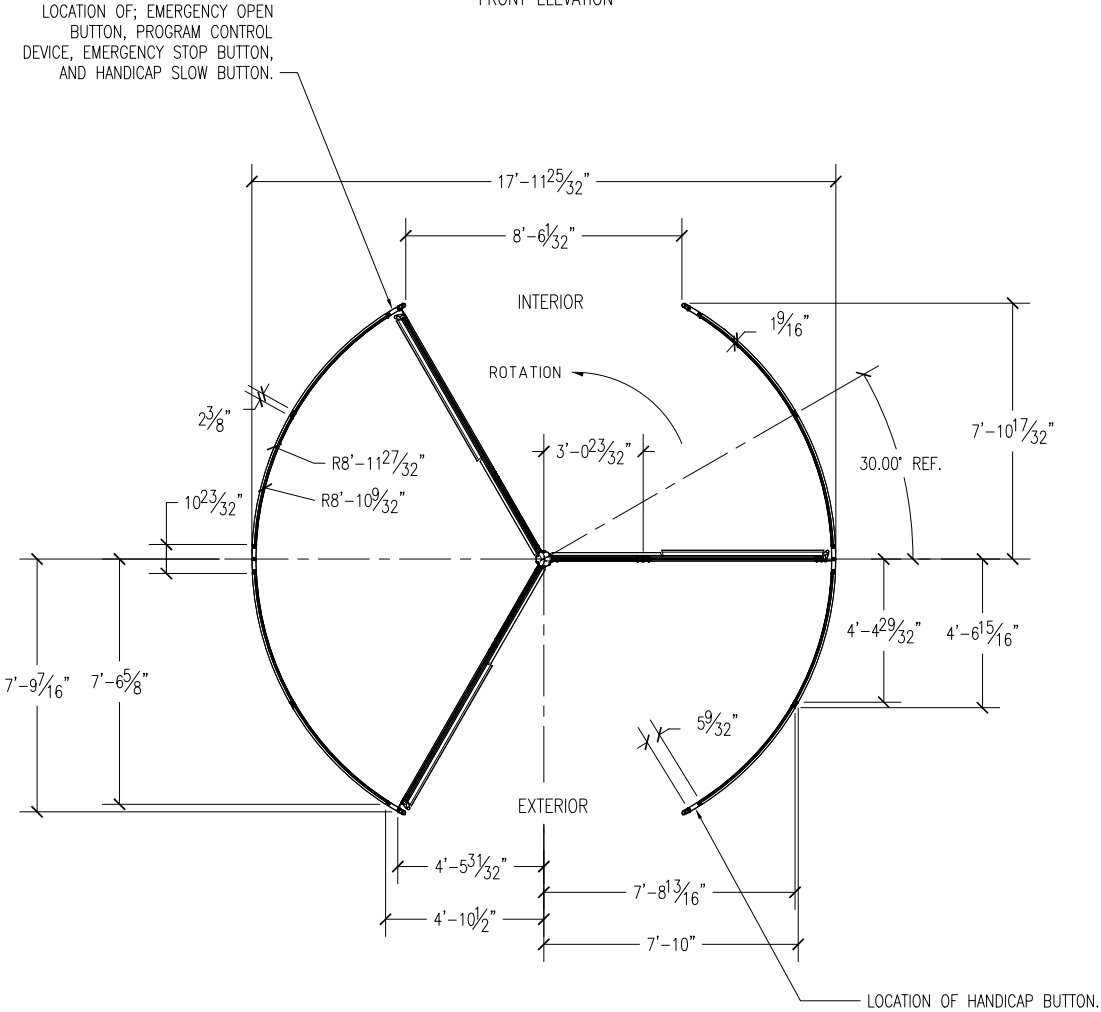
ASSA ABLOY Entrance Systems  
1900 Airport Road  
Monroe, NC 28110  
Phone: 1-866-237-2687  
specdesk.na.entrance@assaabloy.com



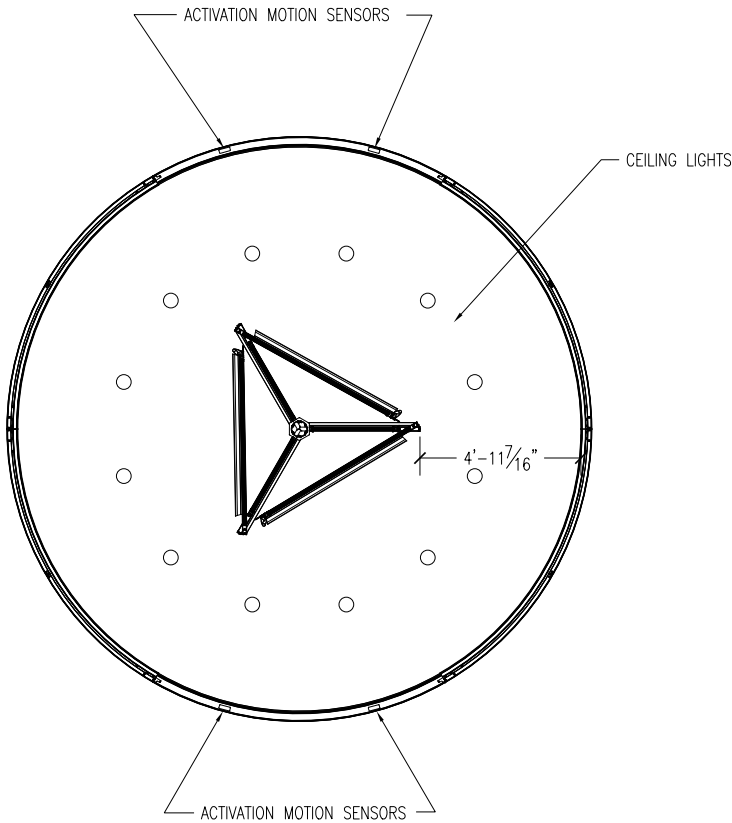
FRONT ELEVATION



SIDE ELEVATION



SECTION A-A



ESCAPE POSITION OF DOORS  
AND LIGHTING POSITIONS  
(CANOPY REMOVED FROM VIEW)