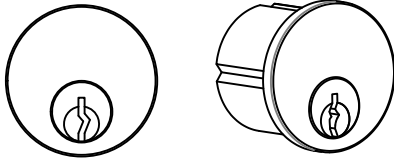
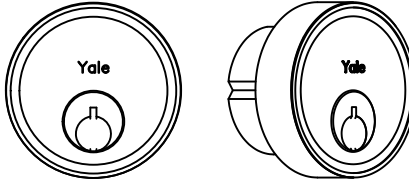


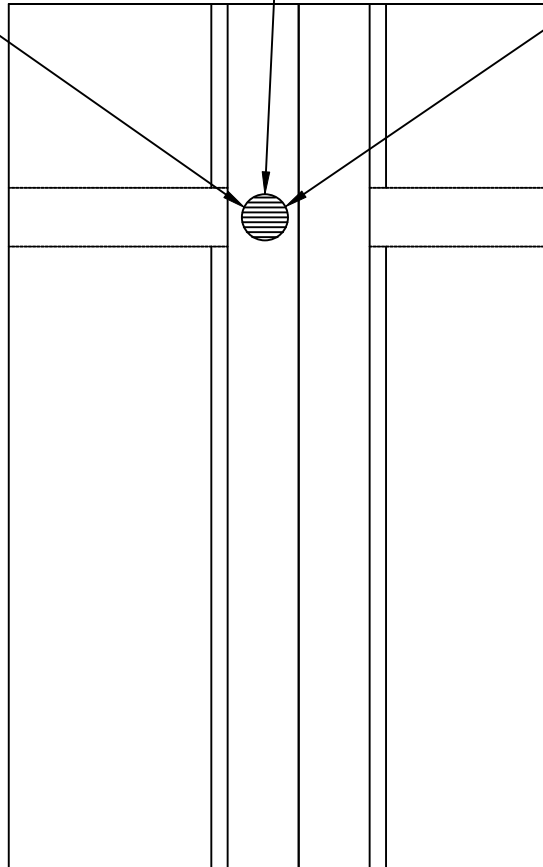
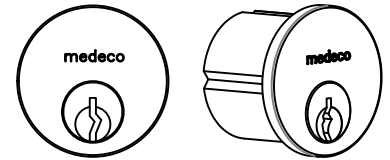
KEYED ALIKE



REPLACEABLE CORE



MEDECO CONSTRUCTION



NOTES:

- CLINDER IS PLACED 40 3/4" [1035.1] FROM BOTTOM OF DOOR PANEL.

DWG NO. 1022563							
DRN BY	CAT	DATE	07/07/2021	CHK BY	SS	DATE	07/07/2021
		REV.	1.0			DATE	07/07/2021

ASSA ABLOY