

# Compact Revolving Door

## ASSA ABLOY RD150

**ASSA ABLOY**  
Entrance Systems

The global leader in  
door opening solutions



The ASSA ABLOY RD150 Automatic Revolving Door that adapts safely to faster pedestrian traffic. The whole system is independently certified to comply with EN16005:2012.

### **Sustainable Entrances**

ASSA ABLOY revolving doors can reduce the amount of energy needed to heat or cool a building, resulting in optimal energy savings and smaller carbon footprint. Regular maintenance, additional sensors and add-on products can further increase saving capabilities while prolonging the equipment's life.

### **Safety the highest priority**

To provide absolute peace of mind for the building owner, the whole system has been independently tested and certified against the most demanding and up to date European standards for product safety, EN16005:2012.

### **Convenience**

The ASSA ABLOY RD150 combines the advantages of a fully automatic revolving door for convenience, with the flexibility of a manually operated door for faster access. It is unique in so far as the Automatic High Speed and the Manual Speed Control settings can be individually adjusted to different values. The door mounted safety systems are active in all operations and will prevent the manual use of the door set, at a speed that is faster than the slowest occupant.

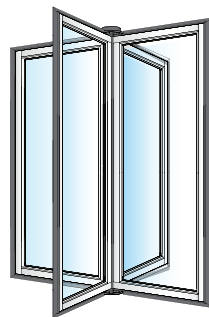


### Aesthetics

ASSA ABLOY RD150 can be ordered in different configurations depending on the customer's needs.



All of our revolving door systems are made from ASSA ABLOY -designed aluminium profiles which can be anodized, powder-coated or stainless steel-clad.



The doors are designed so that they can be placed and fixed directly onto an existing finished floor surface. No special foundations are required. For new construction and replacement, a ground ring is available as an option.

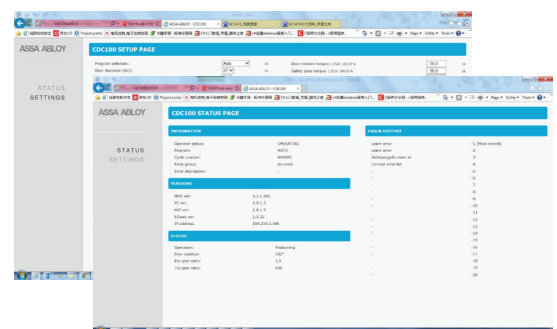
### Control system

The CDC100 a unique embedded control system developed by ASSA ABLOY Entrance Systems to facilitate a fully integrated entrance solution with no compromise in design or function.

- Optimizing installation time and maintenance
- Automatic system check up upon installation
- Fast and safe adjustments and initial set up of all safety zones and speed settings
- Monitored safety systems
- Minimum down time
- Automatic event log
- Automatic diagnostics

### Graphic service interface

- Showing system status
- Parameter configuration







### User benefits

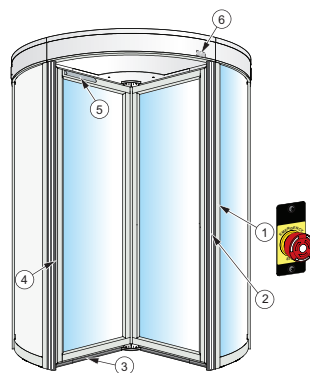
A revolving door that adapts intuitively to each user, controls excess speed and stops in just the right position.

- Dual function Automatic Revolving Door System providing hands free operation and safe Manual Speed control.
- Safety systems are active in all operations.
- Adaptive "Fast Track" functionality.
- Door wings always return to the next park position, creating a natural safe path for entry or exit, as well as maximising energy efficiency and minimising air leakage.
- Future proof technology for easy re-purposing of the door system, in the event of a change in building use.

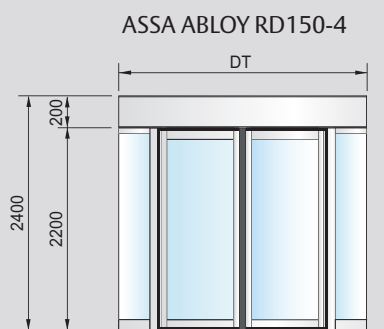
### Standard safety features

The door range combines safety and convenience, whilst placing the safety of the user as its number one priority.

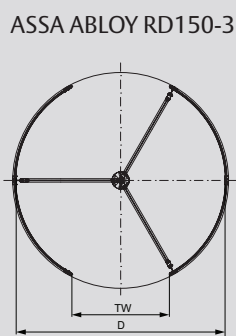
- If an obstacle prohibits the rotation of the door (the resistance is higher than the pre-set value) the rotation will cease.
- Unique soft edge rubber profiles to the door leaves all help to reduce the risk of injury from contact with the door.
- Low energy rotation returns the door safely to the parked position, with every door leaf edge guarded by the outer walls.
- Compressible safety edges with monitored switching, applied to the outer wall entrance posts and door wing horizontal / vertical edges signal the door to stop.



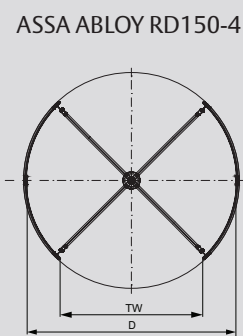
1. Emergency stop button
2. Pressure sensitive safety edges on the drum edges
3. Horizontal pressure sensitive safety edges on the door leaves
4. Vertical pressure sensitive safety edges on the door leaves
5. Infrared presence sensing system (option)
6. Vertical presence photocell sensor PDR (option)



D	DT
1800	1888
2100	2188
2400	2488
2700	2788
3000	3088



TW(3W)
793
943
1093
1243
1393



TW(4W)
1191
1403
1615
1827
2093

### Technical specifications

Power supply	100-240 VAC+10/-15%, 50/60 Hz, mains fuse max. 10 A (building installation)
Power consumption	360W

### Standard equipment

Automatic drive with integrated digital encoder
Control unit built-in behind the fascia above the inside entrance
Microprocessor controlled with plug-in modules, LED status lights and graphic service interface
Speed control
Pressure sensitive safety edges on the drum edges
Outer wall and door sections made from aluminium profiles
Glass Outer wall: 4 + 4 mm clear laminated (Frame/Slim)
Glass door leaves: 3 + 3 mm clear laminated (Frame)
Other types of glass available
Ceiling made from white laminated panels
Dust protection roof made from white laminated panels
Emergency stop button
Independent certification to EN16005:2012



### Accessories and Options

Two outer wall designs; Frame or Slim.	
Powder-coated finish (RAL colours)	
Anodizing, clear or bronze	
Stainless steel cladding	
Vertical pressure sensitive safety edges on the door leaves	
Horizontal pressure sensitive safety edges on the door leaves	
Night closing doors (NCD), manual or automatic	
RC3 burglar resistance according to EN1627:2011	
Mechanical lock on NCD	
Mechanical lock on door leaf	
Fascia, non-standard height	200 - 1250 mm
Internal height non-standard	2000 - 3000 mm
Sheet metal sandwich panel instead of glass (Frame only)	
Ground ring for unfinished floor	
Various finishes to ceiling and dust cover	
Water-resistant cover	
Midrails on door leaves and/or outer walls	
Lighting; LED spots or LED down-lights, with control.	
Insulation to the canopy and roof	
Intelligent Air curtain integrated in the canopy or external side mounted	
Additional emergency stop button	
Infrared presence sensing system	
Vertical presence photocell sensor PDR	

This equipment should be installed, regularly inspected, maintained and serviced by trained and authorized personnel. Preventive maintenance plans are highly recommended for a proper and safe operation. Talk to your ASSA ABLOY Entrance Systems representative to learn more about our service offering!