

## Speedgate

# ASSA ABLOY SG200 Series

Security entrance control



## The future of speedgate safety

Strengthen your building's access control with a secure, yet elegant slim speedgate, where 24 optical safety sensors work together to monitor and deter unauthorised people flow on your premises.

The slim speedgate turnstile SG200 from ASSA ABLOY is a dependable and stylish solution for regulating the people flow in and out of your building. With a 24 V BLDC motor powering its fast-opening, hidden barrier wings made of 8/10 mm tempered glass by default, it's a highly effective entryway that can monitor and block unwanted access as/if necessary, significantly contributing towards a steady level of safety and security in your environment.

The gate's galvanized coated steel frame and stainless steel housing panels, together with its 10 mm tempered glass top lid and side panels, as well as illuminated indication pictograms, make it a sleek, high-quality addition to your building's entryway. What makes it stand out from our other solutions, however, is its intuitive Access Control Integration, working easily with any access control system through dry contact or COM ports.

You can even choose to customize the gate's top lid, with optional cuts available for surface mount readers, reader holders or stands (as well as standard or custom-designed posts for access controller integration). Just let us know what you need.

Experience a safer  
and more open world

### Design Specifications

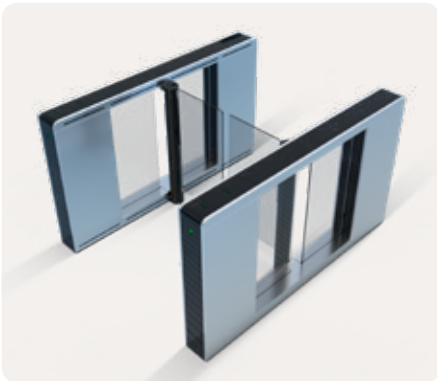
Construction	Steel
Passage width	650 / 915 / 1200 mm
Weight	130 kg
Power supply	100 – 240 VAC, 50 / 60 Hz
Logic voltage	24 VDC
Operation temperature	0 °C / +55 °C
IP protection	Cabinet IP44
Mean cycles before failures (MCBF)	10.000.000
Mean time to repair (MTTR)	< 30 min.

### Options and accessories

- Laminated glass or acrylic / polycarbonate barrier wings
- Powder coated steel panels
- Stainless steel base plate
- Card inserter
- Access controller integration brackets and posts
- Fail-locked / Emergency-lock
- Push button controller
- Touch panel controller



SG200



SG200 Wide

### High flow rate

The SG200 slim speedgate provides maximum security even for an exceptionally high flow rate of people. The illuminated indication pictograms give clear directions to staff and visitors for the best possible route they can take, and the adjustable gate direction control adds flexibility to all building entrance control systems.

### Reliability and long life cycle

Our reliable mechanical system allows for maximum stability, as well as ensuring a consistently low level of maintenance to provide permanent service life – leading to a significantly higher return-on-investment than our competitors' products.

### Advanced Security

With our advanced detection system, sensors and sensor-based algorithms work together to track the passage of authorised users, while controlling unauthorised and/or fraudulent attempts at the same time. This provides the maximum security level against unauthorised passages such as tailgating, wrong-way passage etc. (This is also the reason we provide taller barrier wing options – for more details, see Design Specifications.)

Such attempts will be blocked by the fast-closing barrier wings response, while the intrusion alarm warning will be activated during endeavours such as lane intrusion timeouts, climb-over/crawl-under etc.

### Emergency and power outage modes

In the event of an emergency or power outage the gate opens the barrier wings automatically (fail safe mode). Once the emergency alarm stops and/or the electricity returns, the gate resets itself automatically. Upon request, the system can be configured for manual operation instead of automatic opening.

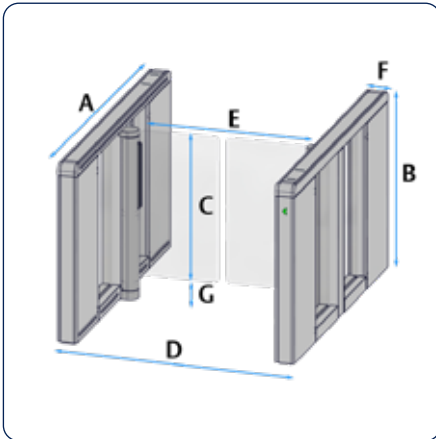
### LED indicators

The LED lights on the turnstile indicate the operating status in both directions.

Green Passage confirmed  
Red No passage

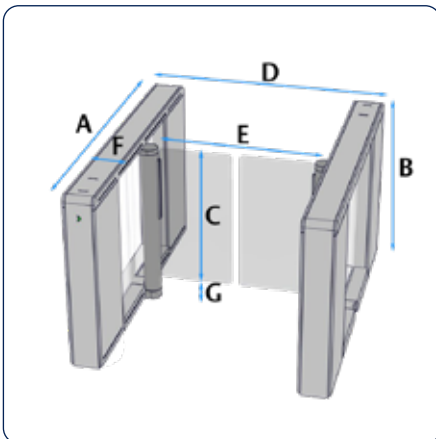
### Settings

Operation mode for each directions	Controlled / Free / Locked
Acoustic notifications	On / Off
Release time out	5, 10, 15, 20 sec
Emergency connection	On / Off



**SG200**

Total Length (A)	1750 mm / 68.90 inch
Cabinet Height (B)	1023 mm / 40.27 inch
Barrier Wing Height (C+G)	960 mm / 1200 mm / 1800 mm 37.80 inch / 47.24 inch / 70.87 inch
Spacing between Wings and finished floor level (G)	135 mm / 5.31 inch
Total Width (D)	1041 mm / 40.98 inch
Clear Passage Width (E)	650 mm / 915 mm / 1200 mm 25.59 inch / 36.02 inch / 47.24 inch
Cabinet Width (F)	110 mm / 4.33 inch
Spacing Between Wings	50 mm / 1.97 inch
Weight Left / Right cabinet	125 kg / 275.57 lbs
Weight Center cabinet	160 kg / 352.73 lbs



**SG200 Wide**

Total Length (A)	1750 mm / 68.90 inch
Cabinet Height (B)	1023 mm / 40.27 inch
Barrier Wing Height (C+G)	960 mm / 1200 mm / 1800 mm 37.80 inch / 47.24 inch / 70.87 inch
Spacing between Wings and finished floor level (G)	135 mm / 5.31 inch
Total Width (D)	1181 mm / 46.49 inch
Clear Passage Width (E)	650 mm / 915 mm / 1200 mm 25.59 inch / 36.02 inch / 47.24 inch
Cabinet Width (F)	180 mm / 7.08 inch
Spacing Between Wings	50 mm / 1.97 inch
Weight Left / Right cabinet	160 kg / 352.73 lbs
Weight Center cabinet	200 kg / 440.92 lbs

This equipment should be installed, regularly inspected, maintained and serviced by trained and authorized personnel. Preventive maintenance plans are highly recommended for a proper and safe operation. Talk to your ASSA ABLOY Entrance Systems representative to learn more about our service offering.

ASSA ABLOY as word and logo are trademarks owned by the ASSA ABLOY Group.