

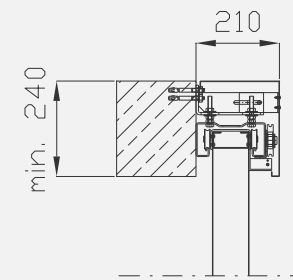
STEEL SLIDING TLB GATE

mercor
ASSA ABLOY

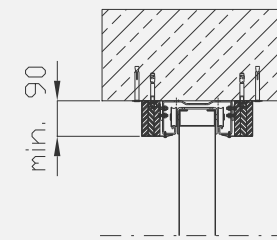
EI 60, EI 120

- Sliding gate – 1 leaf, 2 leaf, telescopic.
- Optionally pedestrian door up to 120 cm width (clear opening), 1 piece or more.
- Sliding gate installed to the lintel or to the ceiling, possibility to hide the gate in the gypsum wall.
- Standard or relocated counterweight, standard stop item or front stop.
- CE - harmonised standard: EN 16034:2014, EN 13241:2003+A2:2016
- Environmental Product Declaration as per ISO 14025 and EN 15804

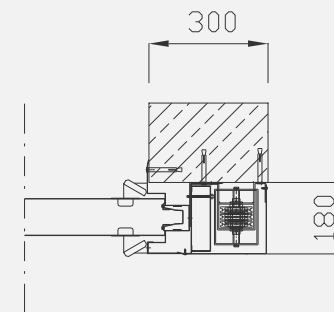
TLB gate – installation to the lintel



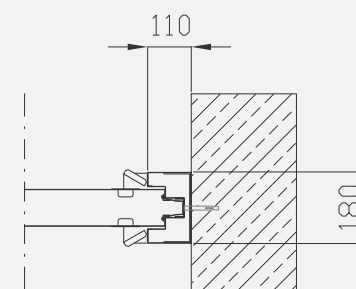
TLB gate – installation to the ceiling



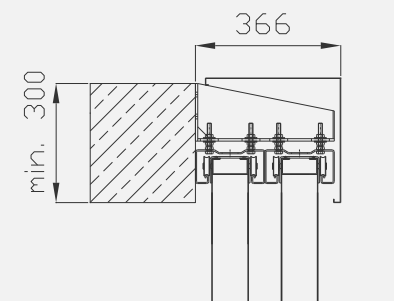
TLB gate – stop item



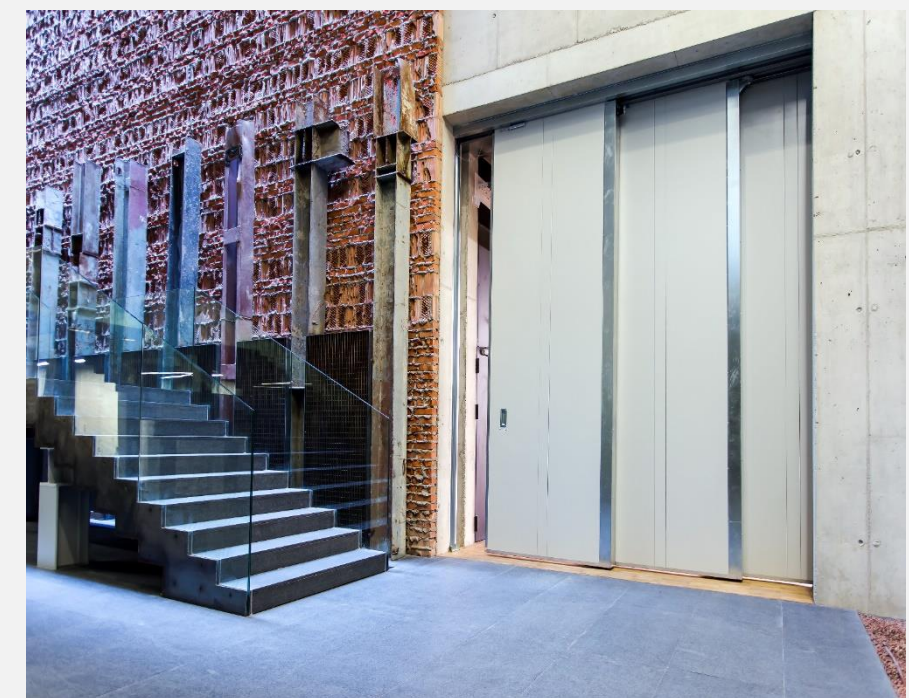
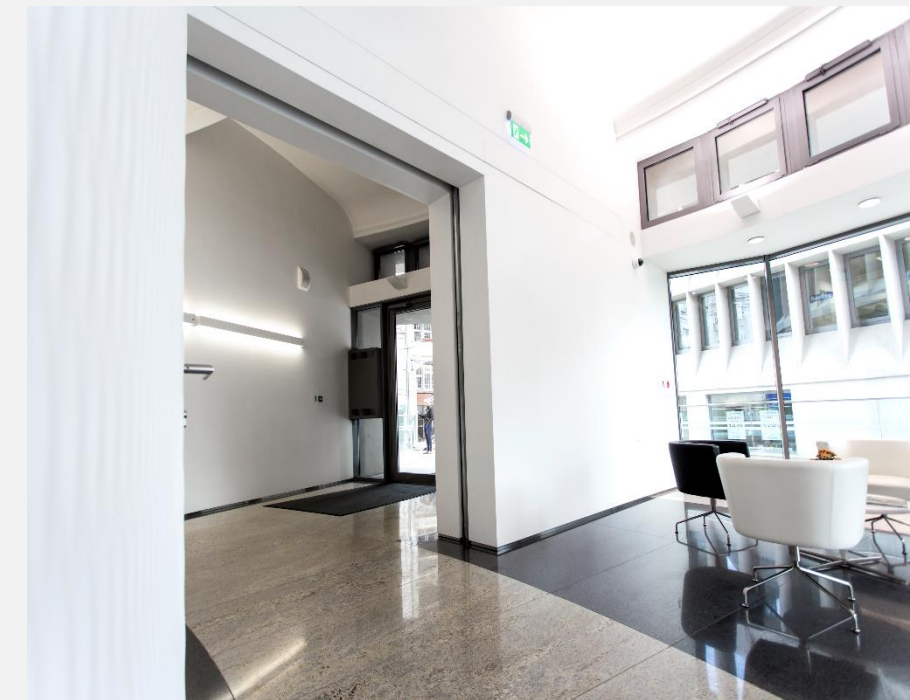
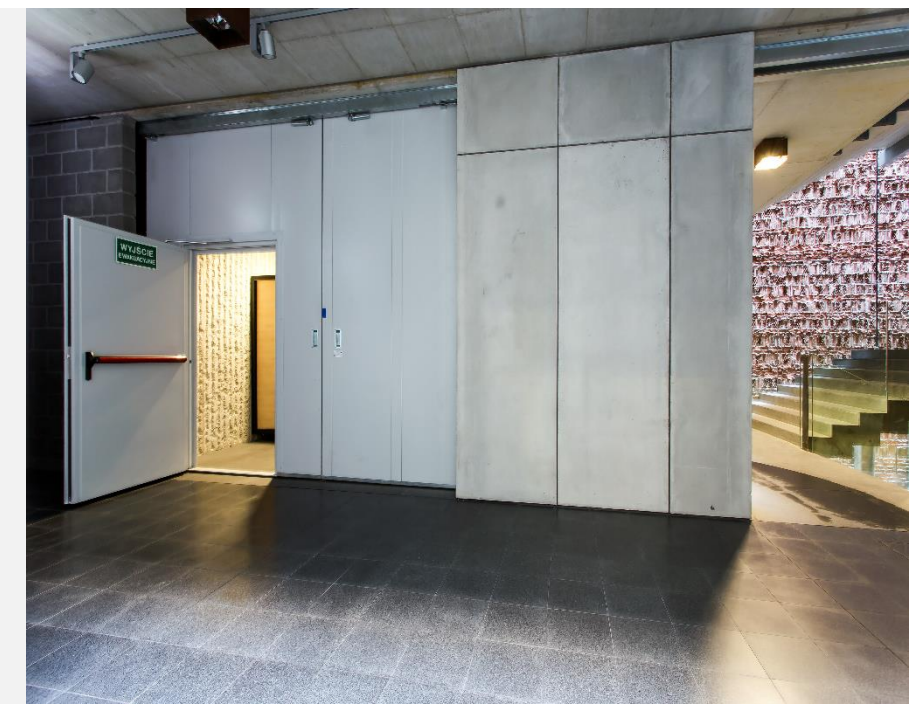
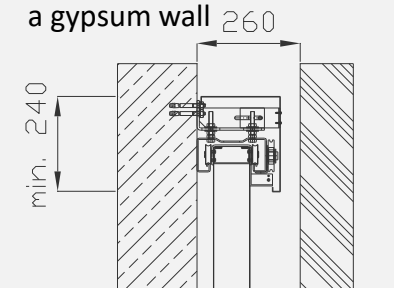
TLB gate - front stop



TLB telescopic 2 segments gate



TLB gate – installation to the lintel with a gypsum wall



- Operated by manual opening and gravity closing
- Gate leaf made of two pressed, galvanized steel sheets 0,8mm thick.
- Filler with gypsum boards and mineral wool, join to the steel sheet with polyurethane adhesive.
- Sliding gate equipped with an electromagnetic door holder, or optionally, with automation.
- Sliding gate equipped with a cover of the rail.
- Additional set of equipment: control panel, release button, smoke detectors.
- Mechanical durability for the gate – class 6 (PN-EN 12400:2004), mechanical durability for pedestrian door – class 5 (PN-EN 12400:2004).