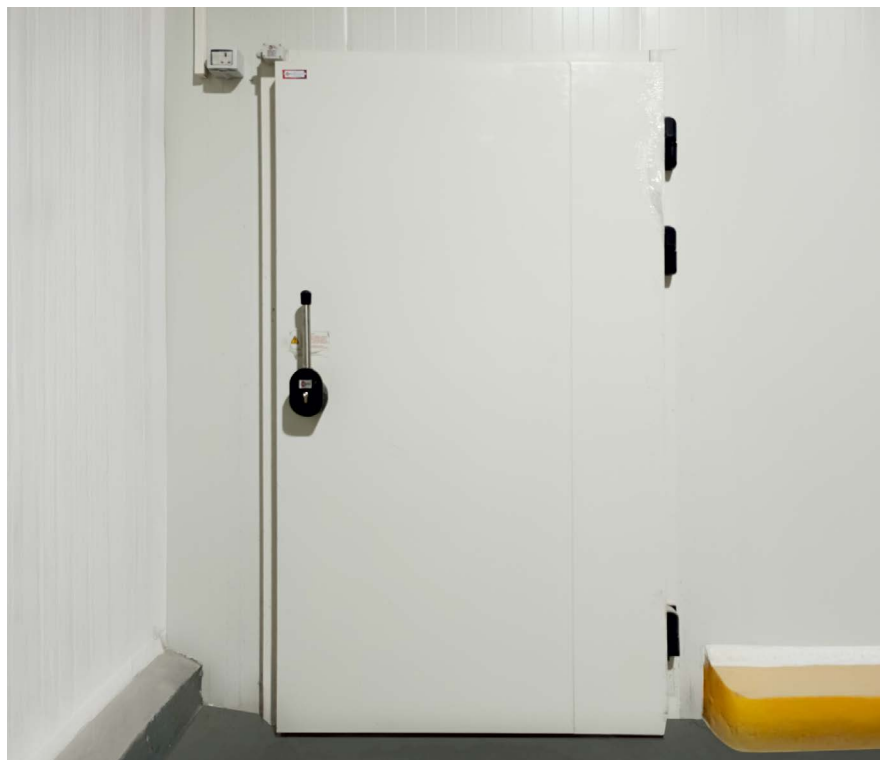


# Cold Chain doors

## ASSA ABLOY CI Mak Swing Blast Freezer



Experience a safer  
and more open world







Mak Swing Blast Freezer Doors are precision-engineered, airtight cold room doors designed specifically for extreme low-temperature environments, capable of maintaining conditions as cold as  $-40^{\circ}\text{C}$ .

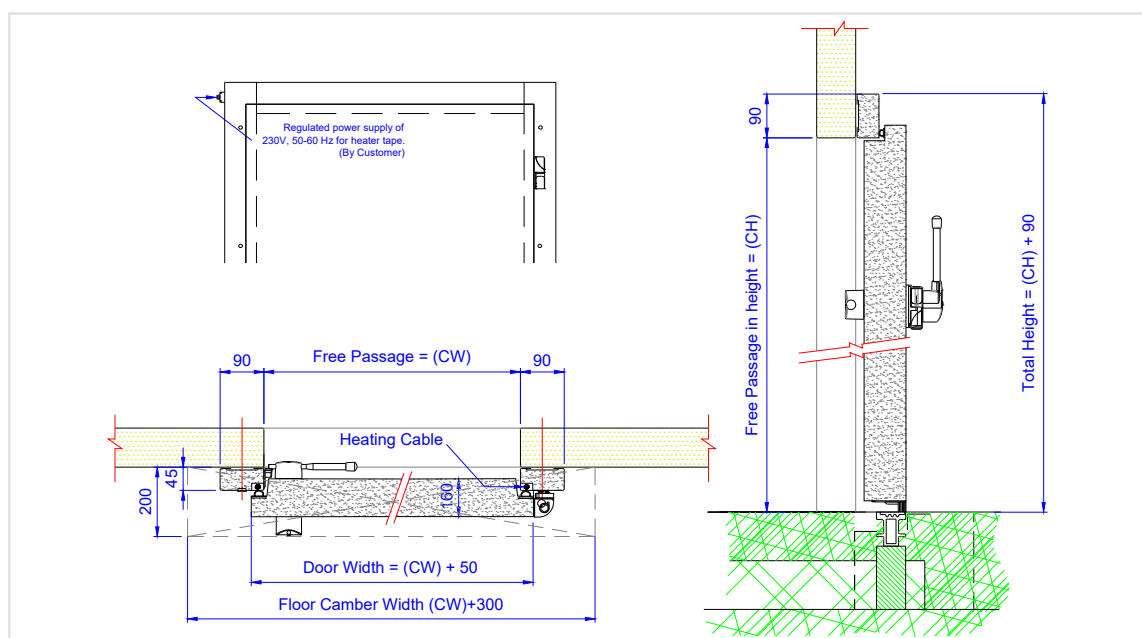
These manually operated doors feature a durable hinged system and a semi-flush overlapping construction, which together ensure a robust and reliable seal. This airtight design is critical for blast freezer applications, where rapid temperature drops and consistent insulation are essential to preserve product integrity and energy efficiency.

With a selection of customizable finishes and colors, this door not only meets stringent thermal and operational demands but also adapts to diverse facility aesthetics. Its rugged construction and precision sealing make it a preferred choice for high-intensity cold storage applications such as blast freezing units, industrial cold rooms, and temperature-sensitive logistics hubs.

### Product overview

- |  |                                     |
|--|-------------------------------------|
|  | Manual swing door                   |
|  | Hygienic anti-bacterial flat finish |
|  | Ultra-low temperature               |
|  | Suitable for wet areas              |
|  | Airtight                            |
|  | Customization                       |

CW =	Clear width
CH =	Clear height



## Dimensions

Clear width: 900 to 1,200 mm

Clear height: upto 2,100 mm

Other dimensions available on request.

## Finishes available

PPGI/PPGL finish in RAL shades- 9002, 5012, 1021  
SS 304 in brush or 2B finish

## Options

Kick plate

## Technical specifications

**Door leaf:** 160 mm thick high density ( $45 \text{ kg/m}^3 \pm 2$ ), 100% CFC free pressure injected 2C Rigid PUR in PPGI/PPGL sheet casing. Inbuilt thermal break. Hinge Reinforcement plate for extra durability of door.

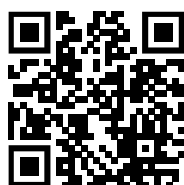
**Wall frame:** Extra high density ( $65 \text{ kg/m}^3$ ), 100% CFC free injected PUR, 3 sided frame made of PPGI/PPGL sheet. Highly reliable and durable heating cable approx  $28 \text{ W/m}$ . Temperature control by inbuilt thermo switch.

**Floor sill:** Heavy duty aluminium extruded sill with heater tape covered with aluminium strip. Face flushed with finished floor level.

**Sealing gasket:** 3 side heavy duty exchangeable EPDM rubber gaskets on the door leaf.

**Hinges:** Heavy duty rising hinges. Perfect door alignment even after years of operation.

**Opener:** Best in class opener with stainless steel handle and PA 6 case. A special design strike with angular ramp facilitates easy closing with perfect sealing at the same time. Highly dependable emergency release mechanism (operable from inside) ensures 100% safety. Very durable Euro profile cylinder fitted on the outside opener.



Find out more  
on the ASSA ABLOY  
CI Mak Swing Blast Freezer  
product page!

In this review we have given you an idea of our capabilities.  
We not only offer standard solutions but also custom solutions. Would you like more information?  
Please contact us, we are happy to think along and advise you accordingly.



This equipment should be installed, regularly inspected, maintained and serviced by trained and authorized personnel. Preventive maintenance plans are highly recommended for a proper and safe operation.  
Talk to your ASSA ABLOY Entrance Systems representative to learn more about our service offering!