

# Healthcare sliding doors

## ASSA ABLOY SL Hygienic Medicare



Experience a safer  
and more open world



It is essential to guarantee the safety of your patients, clients, and employees under all circumstances. This is also the principle of the Medicare sliding door, which ensures a complete hermetic seal.

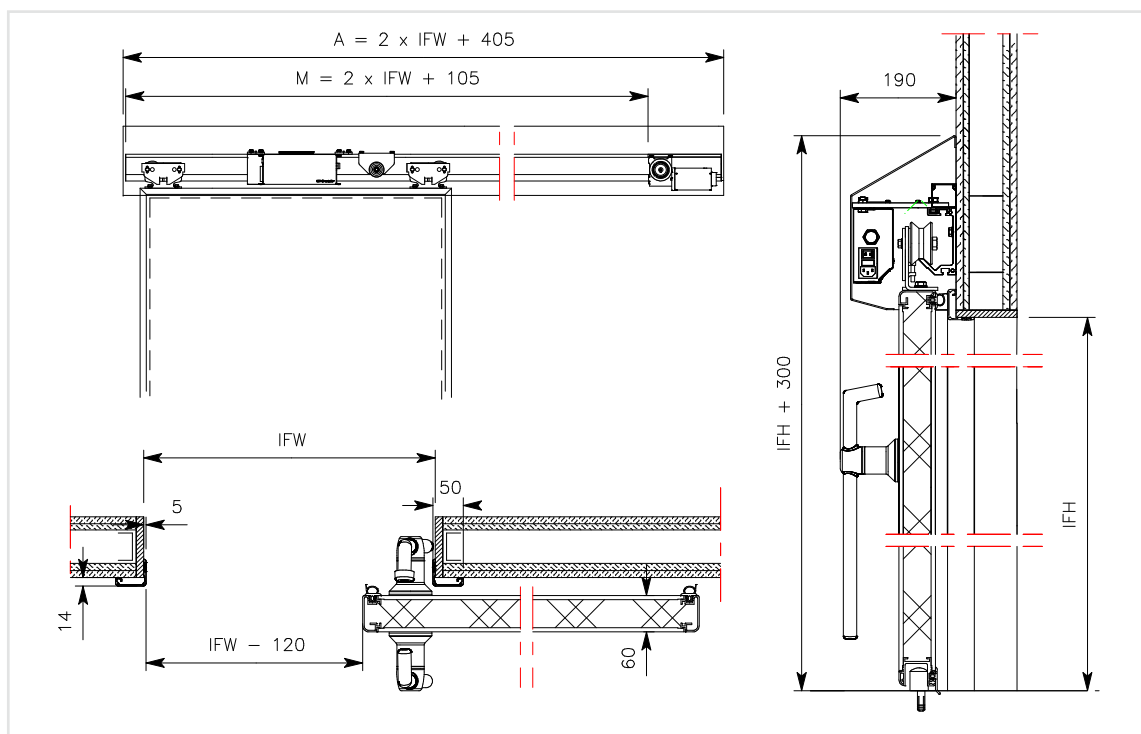
When opening and closing, air displacement is minimal. This is especially important in rooms with conditioned or contaminated air. The room remains airtight even when there is significant underpressure or overpressure.

The Medicare is smoke-proof according to EN 1634-3. In the event of a fire, this can offer life-saving protection against suffocation from outside smoke. Also available in radiation-proof, sound-proof, and/or fire-resistant versions. The Medicare is a reliable and safe choice for your operating room, dressing room, pharmacy, radiation-proof room, quarantine room, or clean room.

### Product overview

< >	Automated or manual sliding door
Hand icon	Hygienic flush finish
Upward arrow icon	Air permeability according to ANSI/UL 1784, EN 1026/12207 class 4 (D)
Smoke icon	Smoke resistant according to EN 1634-3
Speaker icon	Noise reducing up to 28 dB
Radiation icon	Radiation-resistant version also available
CE icon	CE marked

A =	Automatic
M =	Manually
IFW =	Inside frame width
IFH =	Inside frame height



### Automation (optional)

- Available with powerful and reliable automation.
- Automation consisting of a motor, drive and controller is concealed under the cover. The opening and closing time is variably adjustable up to 0.8 m/s. Equipped with obstacle protection in the reveal opening. The system complies with machine guidelines and is compatible with EN16005 safety regulations. Comes standard with human passage and lock function with up to three other doors.
- Various options for operation and protection available.

### Certificates

- Highest classifications based on air permeability according to:
  - ANSI/UL 1784:1997 up to an overpressure of up to 100 Pa, recorded in Peutz Report B1080-2.
  - EN 1026/12207; class 4 (D).
- Noise reducing up to  $R_w = 28$  dB (door leaf value) and  $R_{w,p} = 27$  dB (practice value), according to ISO10140-1:2021 and ISO 717-1:2020.
- Hot (S200) and cold (Sa) smoke resistant according to EN 1634-3:2004 and EN 13501-2, class C5 according to EN 1191:2012.
- When equipped with automation; CE marked according to Machinery Directive 2006/42/EC, Low Voltage Directive 2014/35/EC, EMC Directive 2014/30/EC.

### Dimensions

Inside frame width: 800 to 2,100 mm
Inside frame height: 2,100 to 2,700 mm
Door leaf thickness: 60

### Technical specifications

**Door leaf:** The door leaf has a thickness of 60 mm, has a polyurethane core (CFC free) with an MDF barrier layer on both sides, and is finished with 0.7 mm high-pressure laminate (HPL). The aluminium border has rounded corners and is flush with the door leaf.

**Seal:** All around, the door leaf is finished with a high quality and easily replaceable EPDM sealing profile. When closed, the rubber is pressed against the frame and floor for a complete air and smoke-tight seal.

**Rail:** Low-noise aluminium rail construction with indentation, type MF5. The placement of the nylon wheels on the rails prevents the adherence of dirt and wear.

### Options

Two-wing version (not in combination with smoke resistance)
Door leaf finish of 4 mm HPL instead of MDF barrier (for clean rooms)
Various options for operation and protection
Various window and blind options
Lead lining 1–3 mm
Medical grounding: potential equalisation or insulated
Imagine foil

## Options for operation

### Manual



**Hermetic opener**  
Stainless steel inner-outer opener with lever principle.



**D-shaped handle**  
Stainless steel handle for light weighted doors.



**Bowls shaped grip**  
Stainless steel grip handle that allows the door to fully open.

### Automatic



**MS1 contactless switch**  
Non-contact motion sensor based on radar technology.



**MS2 Contactless Switch**  
Non-contact motion sensor with LED operation.



**ES1 Elbow Switch**  
Nylon switch for opening automatic doors.



**ES2 Elbow Switch**  
Nylon switch with stainless steel front for opening automatic doors.



**VS2 Foot Switch**  
Stainless steel foot switch for opening automatic doors.



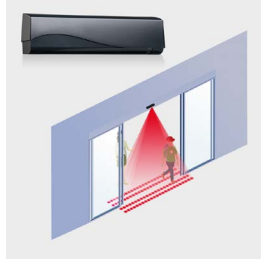
**VS3 Foot Switch**  
Motion sensor for non-contact opening of automatic doors.

### Operation

- Stainless-steel inside/outside opener with lever mechanism, allowing for the door to be opened effortlessly.

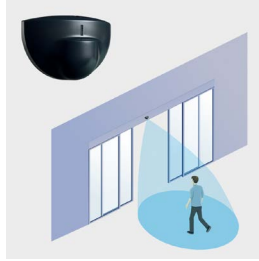
## Options for security & windows

### Detection sensors



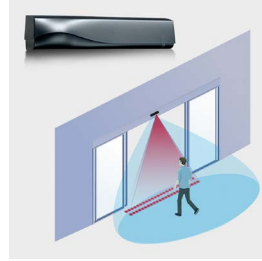
#### Security Sensor (infrared)

The security sensor uses the 3-dimensional infrared curtain to protect against contact with the doors.



#### Opening sensor (radar)

Opening sensor for automatic doors. Useful when the switch must not be touched for reasons of hygiene or comfort.



#### Presence sensor (infrared + radar)

This sensor combines radar technology for the activation of the door with infrared technology for security. nless steel inner-outer opener with lever principle.

## Window blindings



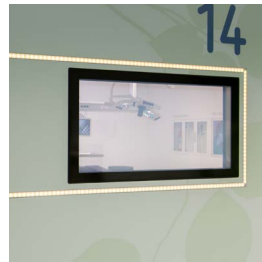
#### Vertical blinds

Changes the glass from transparent to darkened by means of blinds that are incorporated into the glass. Available in white, light grey or grey.



#### Cellular shades

Creates privacy by means of double pleated curtain in the glass that can be closed (electrically).



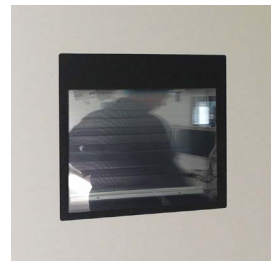
#### Smart Glass

A switchable glass panel that can change from matte to transparent and vice versa at the push of a button.



#### Laser resistant curtain/ glass

Protect people from harmful laser beams by means of a built-in laser-resistant curtain or laser-resistant glass.



## Options windows

400 x 400 mm

300 x 600 mm

600 x 600 mm

Other dimensions available on request

Maximum glass size

IFW-400 (inside frame width)

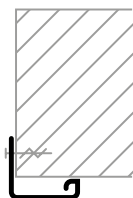
IFH-450 (inside frame height)

Slat blinds, manual or electric

Smart Glass

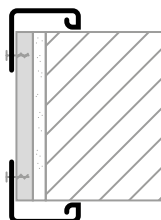
Laser resistant glass/screens

## Options frames



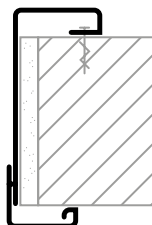
### Assembly frame

Clear anodised aluminium assembly frame on one side.



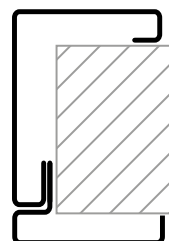
### Malmö

Comprehensive system frame, consisting of double-sided clear anodised aluminium assembly frame with HPL reveal finish in the colour of the door leaf.



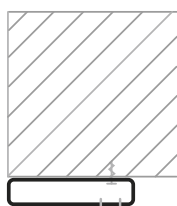
### Halmstad

Comprehensive system frame, consisting of one-sided clear anodised aluminium assembly frame and a brushed stainless steel reveal finish.



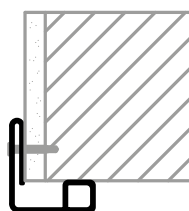
### Oslo

Wrap-around frame in brushed stainless steel.



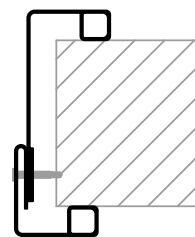
### Oslo MK

One-sided frame in brushed stainless steel.



### Assembly frame Inox

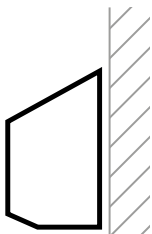
One-sided assembly frame in brushed or powdercoated stainless steel.



### Helsinki

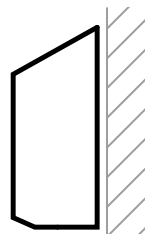
Comprehensive system frame, consisting of one-sided assembly frame and a reveal finish in brushed or powdercoated stainless steel.

## Options canopies



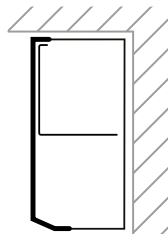
### Canopy Low

Sloping, removable aluminium cover in RAL 9006 or 9010, with plastic end caps on both sides, or completely in stainless steel. Suitable for rear engine.



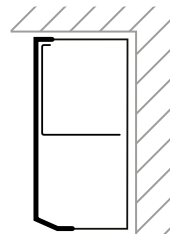
### Canopy High

Sloping, removable aluminium cover in RAL 9006 or 9010, with plastic end caps on both sides, or completely in stainless steel. Suitable for top motor.



### Canopy Ceiling

Removable aluminium cover in RAL 9006 or 9010, with plastic end caps on both sides, or completely in stainless steel. Suitable for top or rear engine.



### Canopy Cove

Removable aluminium cover in RAL 9006 or 9010, with plastic end caps on both sides, or completely in stainless steel. Suitable for top or rear engine.

### Canopy

- Detachable canopy type Low, High, Ceiling, or Cove. Made from aluminium RAL 9006 or 9010, with a plastic end caps on either side or completely made of stainless steel.



Find out more on the ASSA ABLOY SL Hygienic Medicare product page!



This equipment should be installed, regularly inspected, maintained and serviced by trained and authorized personnel. Preventive maintenance plans are highly recommended for a proper and safe operation. Talk to your ASSA ABLOY Entrance Systems representative to learn more about our service offering!