

Healthcare sliding doors

ASSA ABLOY SL Hygienic Medicare Sound



Experience a safer
and more open world



In environments that require silence and concentration, it is important that the airtight doors also exclude as much noise as possible. Naturally, you can expect this feature from the soundproof Medicare Sound.

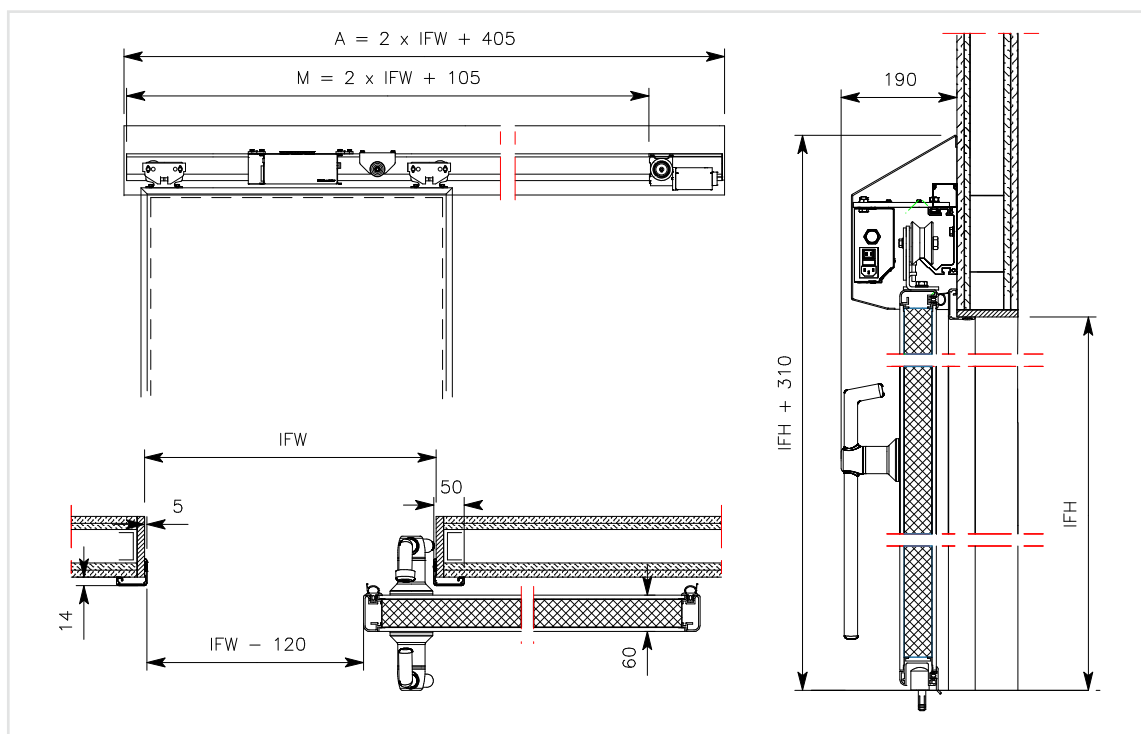
The unique core of this door absorbs ambient noise up to an impressive 39 dB (lab value practice, Rw_p according to ISO717-1). Combined with our extremely quiet automation, the doors open and close almost noiselessly.

You will be assured of a pleasant environment in which patients can rest and professionals can optimally concentrate. The Medicare Sound is a reliable choice for, for example, operating rooms, intensive care, isolation rooms, or clean rooms.

Product overview

- | | |
|-----|---|
| < > | Automated or manual sliding door |
| ✋ | Hygienic flush finish |
| ↕ | Air permeability according to ANSI/UL 1784, EN 1026/12207 class 4 (D) |
| 🔊 | Noise reducing up to 39 dB |
| CE | CE marked |

A =	Automatic
M =	Manually
IFW =	Inside frame width
IFH =	Inside frame height



Automation (optional)

- Available with powerful and reliable automation.
- Automation consisting of a motor, drive, and controller is concealed under the cover. The opening and closing time is variably adjustable up to 0.8 m/s. Equipped with obstacle protection in the reveal opening. The system complies with machine guidelines and is compatible with EN16005 safety regulations. Comes standard with human passage and lock function with up to three other doors.
- Various options for operation and protection available.

Certificates

- Highest classifications based on air permeability according to:
 - ANSI/UL 1784:1997 up to an overpressure of up to 100 Pa, recorded in Peutz Report B1080-2.
 - EN 1026/12207; class 4 (D).
- Noise-reducing up to $R_w = 39$ dB (door leaf value) and $R_{w,p} = 39$ dB (practice value), according to ISO10140-1:2021 and ISO 717-1:2020.
- When equipped with automation: CE marked according to Machinery Directive 2006/42/EC, Low Voltage Directive 2014/35/EC, EMC Directive 2014/30/EC.

Dimensions

Inside frame width: 800 to 2,000 mm
Inside frame height: 2,100 to 2,600 mm
Door leaf thickness: 60

Technical specifications

Door leaf: The door leaf has a thickness of 60 mm, has a noise-resistant core with an MDF barrier layer on both sides, and is finished with 0.7 mm high-pressure laminate. The aluminium border has rounded corners and is flush with the door leaf.

Seal: All around, the door leaf is finished with a high quality and easily replaceable EPDM sealing profile. When closed, the rubber is pressed against the frame and floor for a fully airtight seal.

Rail: Low-noise aluminium rail construction with indentation, type MF5. The placement of the nylon wheels on the rails prevents the adherence of dirt and wear.

Options

Various options for operation and protection
Various window and blind options
Medical grounding: potential equalisation or insulated
Image foil

Options for operation

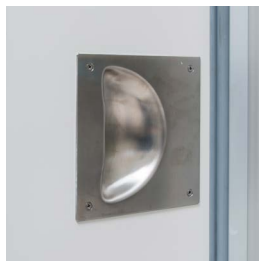
Manual



Hermetic opener
Stainless steel inner-outer opener with lever principle.



D-shaped handle
Stainless steel handle for light weighted doors.



Bowlshaped grip
Stainless steel grip handle that allows the door to fully open.

Automatic



MS1 contactless switch
Non-contact motion sensor based on radar technology.



MS2 Contactless Switch
Non-contact motion sensor with LED operation.



ES1 Elbow Switch
Nylon switch for opening automatic doors.



ES2 Elbow Switch
Nylon switch with stainless steel front for opening automatic doors.



VS2 Foot Switch
Stainless steel foot switch for opening automatic doors.



VS3 Foot Switch
Motion sensor for non-contact opening of automatic doors.

Operation

- Stainless-steel inside/outside opener with lever mechanism, allowing for the door to be opened effortlessly.

Options for security & windows

Detection sensors



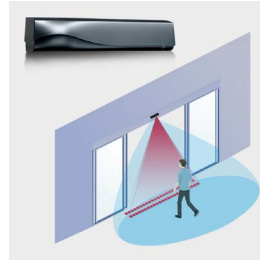
Security Sensor (infrared)

The security sensor uses the 3-dimensional infrared curtain to protect against contact with the doors.



Opening sensor (radar)

Opening sensor for automatic doors. Useful when the switch must not be touched for reasons of hygiene or comfort.



Presence sensor (infrared + radar)

This sensor combines radar technology for the activation of the door with infrared technology for security. nless steel inner-outer opener with lever principle.

Window blindings



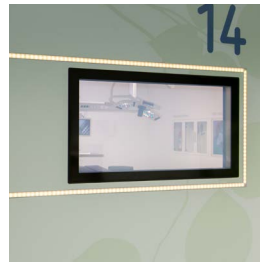
Vertical blinds

Changes the glass from transparent to darkened by means of blinds that are incorporated into the glass. Available in white, light grey or grey.



Cellular shades

Creates privacy by means of double pleated curtain in the glass that can be closed (electrically).



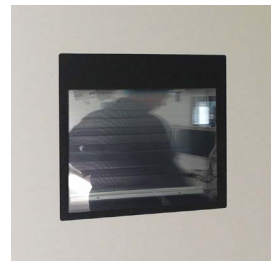
Smart Glass

A switchable glass panel that can change from matte to transparent and vice versa at the push of a button.



Laser resistant curtain/ glass

Protect people from harmful laser beams by means of a built-in laser-resistant curtain or laser-resistant glass.



Options windows

400 x 400 mm

300 x 600 mm

600 x 600 mm

Other dimensions available on request

Maximum glass size

IFW-400 (inside frame width)

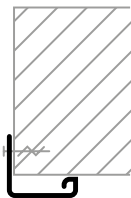
IFH-450 (inside frame height)

Slat blinds, manual or electric

Smart Glass

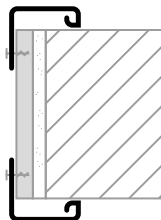
Laser resistant glass/screens

Options frames



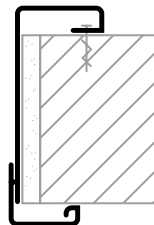
Assembly frame

Clear anodised aluminium assembly frame on one side.



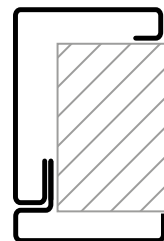
Malmö

Comprehensive system frame, consisting of double-sided clear anodised aluminium assembly frame with HPL reveal finish in the colour of the door leaf.



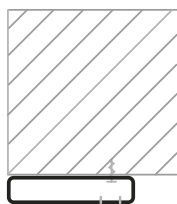
Halmstad

Comprehensive system frame, consisting of one-sided clear anodised aluminium assembly frame and a brushed stainless steel reveal finish.



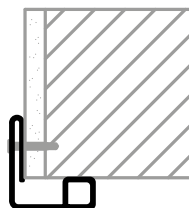
Oslo

Wrap-around frame in brushed stainless steel.



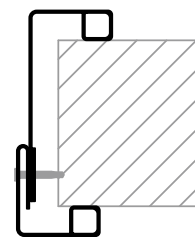
Oslo MK

One-sided frame in brushed stainless steel.



Assembly frame Inox

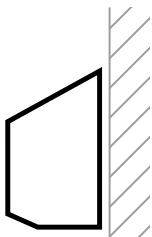
One-sided assembly frame in brushed or powdercoated stainless steel.



Helsinki

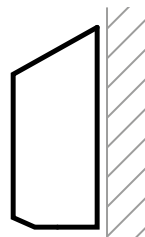
Comprehensive system frame, consisting of one-sided assembly frame and a reveal finish in brushed or powdercoated stainless steel.

Options canopies



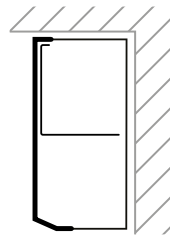
Canopy Low

Sloping, removable aluminium cover in RAL 9006 or 9010, with plastic end caps on both sides, or completely in stainless steel. Suitable for rear engine.



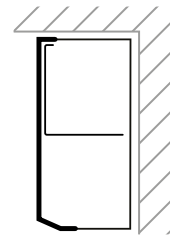
Canopy High

Sloping, removable aluminium cover in RAL 9006 or 9010, with plastic end caps on both sides, or completely in stainless steel. Suitable for top motor.



Canopy Ceiling

Removable aluminium cover in RAL 9006 or 9010, with plastic end caps on both sides, or completely in stainless steel. Suitable for top or rear engine.



Canopy Cove

Removable aluminium cover in RAL 9006 or 9010, with plastic end caps on both sides, or completely in stainless steel. Suitable for top or rear engine.

Canopy

- Detachable canopy type Low, High, Ceiling, or Cove. Made from aluminium RAL 9006 or 9010, with a plastic end caps on either side or completely made of stainless steel.



Find out more
on the ASSA ABLOY
SL Hygienic Medicare
Sound product page!



This equipment should be installed, regularly inspected, maintained and serviced by trained and authorized personnel. Preventive maintenance plans are highly recommended for a proper and safe operation. Talk to your ASSA ABLOY Entrance Systems representative to learn more about our service offering!