

Healthcare sliding doors

ASSA ABLOY SL Hygienic Medicare Intelligence



Experience a safer
and more open world



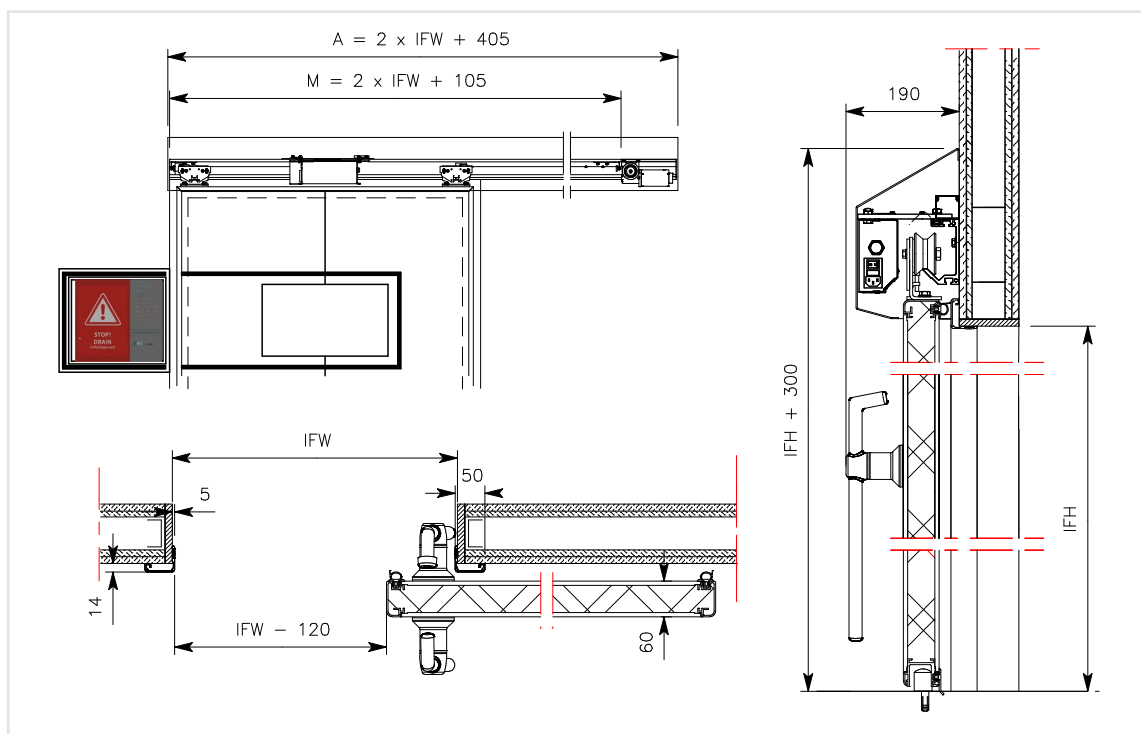
In healthcare, the prevention of misunderstandings, incidents, and errors can save lives. How can a hermetically sealing door system contribute to this? 'People make mistakes because the systems, tasks, and processes with which they work are poorly designed.' (PROF. Lucian leape, Harvard School of Public Health).

Medicare Intelligence reminds, instructs, and warns people on the basis of uniform instructions and intuitive LED warnings. The door is an intelligent information carrier about, for example, latex allergy or radiological activity. This creates or increases attention and contributes to enduring behavioural change, ultimately increasing the safety of the environment. The Intelligence is also a high-quality door system. Thanks to the airtight seal (Peutz), rooms can be optimally conditioned. Medicare Intelligence is also available in a radiation-resistant version.

Product overview

< >	Automated or manual sliding door
Hand icon	Hygienic flush finish
Air flow icon	Air permeability according to ANSI/UL 1784, EN 1026/12207 class 4 (D)
Smoke icon	Smoke resistant according to EN 1634-3
Noise icon	Noise reducing up to 28 dB
Radiation icon	Radiation-resistant version also available
CE icon	CE marked

A =	Automatic
IFW =	Inside frame width
IFH =	Inside frame height



Automation (optional)

- Available with powerful and reliable automation.
- Automation consisting of a motor, drive and controller is concealed under the cover. The opening and closing time is variably adjustable up to 0.8 m/s. Equipped with obstacle protection in the reveal opening. The system complies with machine guidelines and is compatible with EN16005 safety regulations. Comes standard with human passage and lock function with up to three other doors.
- Various options for operation and protection available.

Certificates

- Highest classifications based on air permeability according to:
 - ANSI/UL 1784:1997 up to an overpressure of up to 100 Pa, recorded in Peutz Report B1080-2.
 - EN 1026/12207; class 4 (D).
- Noise reducing up to $R_w = 28$ dB (door leaf value) and $R_{w,p} = 27$ dB (practice value), according to ISO10140-1:2021 and ISO 717-1:2020.
- Hot (S200) and cold (Sa) smoke resistant according to EN 1634-3:2004 and EN 13501-2, class C5 according to EN 1191:2012.
- When equipped with automation: CE marked according to Machinery Directive 2006/42/EC, Low Voltage Directive 2014/35/EC, EMC Directive 2014/30/EC.

Dimensions

Inside frame width: 800 to 2,100 mm
Inside frame height: 2,100 to 2,700 mm
Door leaf thickness: 60

Technical specifications

Door leaf: The door leaf has a thickness of 60 mm, has a polyurethane core (CFC free) with an MDF barrier layer on both sides, and is finished with 0.7 mm high-pressure laminate (HPL). The aluminium border has rounded corners and is flush with the door leaf.

Seal: All around, the door leaf is finished with a high quality and easily replaceable EPDM sealing profile. When closed, the rubber is pressed against the frame and floor for a complete air and smoke-tight seal.

Rail: Low-noise aluminium rail construction with indentation, type MF5. The placement of the nylon wheels on the rails prevents the adherence of dirt and wear.

Options

Various options for operation and protection
Window 600 x 400 and blind options
Lead lining 1–3 mm
Medical grounding: potential equalisation or insulated
Imagine foil

Options for operation

Manual



Hermetic opener
Stainless steel inner-outer opener with lever principle.



D-shaped handle
Stainless steel handle for light weighted doors.



Bowls shaped grip
Stainless steel grip handle that allows the door to fully open.

Automatic



MS1 contactless switch
Non-contact motion sensor based on radar technology.



MS2 Contactless Switch
Non-contact motion sensor with LED operation.



ES1 Elbow Switch
Nylon switch for opening automatic doors.



ES2 Elbow Switch
Nylon switch with stainless steel front for opening automatic doors.



VS2 Foot Switch
Stainless steel foot switch for opening automatic doors.

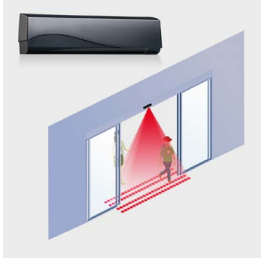


VS3 Foot Switch
Motion sensor for non-contact opening of automatic doors.

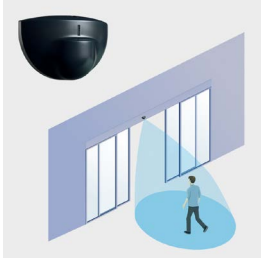
Operation

- Stainless-steel inside/outside opener with lever mechanism, allowing for the door to be opened effortlessly.

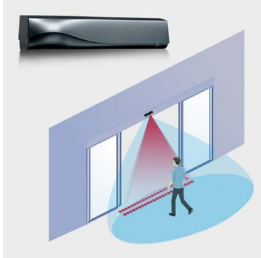
Options for
security & windows
Detection sensors



Security Sensor (infrared)
The security sensor uses the 3-dimensional infrared curtain to protect against contact with the doors.



Opening sensor (radar)
Opening sensor for automatic doors. Useful when the switch must not be touched for reasons of hygiene or comfort.



Presence sensor (infrared + radar)
This sensor combines radar technology for the activation of the door with infrared technology for security. nless steel inner-outer opener with lever principle.

Window blindings



Vertical blinds
Changes the glass from transparent to darkened by means of blinds that are incorporated into the glass. Available in white, light grey or grey.



Cellular shades
Creates privacy by means of double pleated curtain in the glass that can be closed (electrically).



Smart Glass
A switchable glass panel that can change from matte to transparent and vice versa at the push of a button.

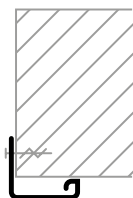


Laser resistant curtain/ glass
Protect people from harmful laser beams by means of a built-in laser-resistant curtain or laser-resistant glass.

Options windows

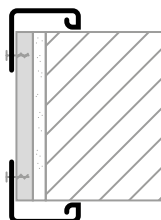
- 600 x 400 mm
- Maximum glass size
IFW-400 (inside frame width)
IFH-450 (inside frame height)
- Slat blinds, manual or electric
- Smart Glass
- Laser resistant glass/screens

Options frames



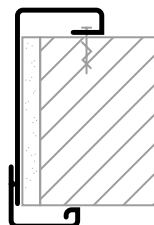
Assembly frame

Clear anodised aluminium assembly frame on one side.



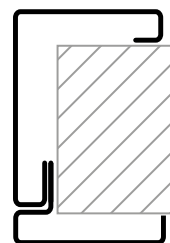
Malmö

Comprehensive system frame, consisting of double-sided clear anodised aluminium assembly frame with HPL reveal finish in the colour of the door leaf.



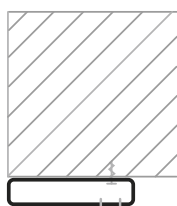
Halmstad

Comprehensive system frame, consisting of one-sided clear anodised aluminium assembly frame and a brushed stainless steel reveal finish.



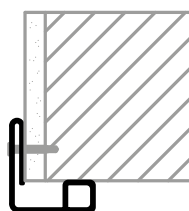
Oslo

Wrap-around frame in brushed stainless steel.



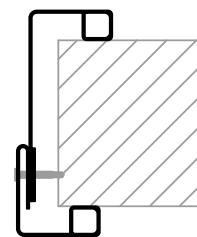
Oslo MK

One-sided frame in brushed stainless steel.



Assembly frame Inox

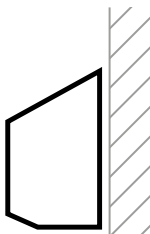
One-sided assembly frame in brushed or powdercoated stainless steel.



Helsinki

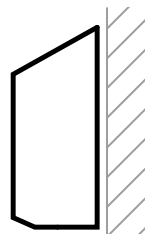
Comprehensive system frame, consisting of one-sided assembly frame and a reveal finish in brushed or powdercoated stainless steel.

Options canopies



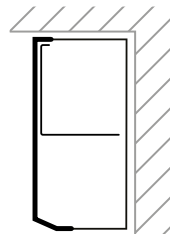
Canopy Low

Sloping, removable aluminium cover in RAL 9006 or 9010, with plastic end caps on both sides, or completely in stainless steel. Suitable for rear engine.



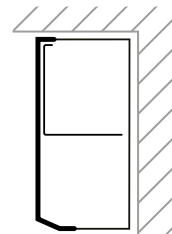
Canopy High

Sloping, removable aluminium cover in RAL 9006 or 9010, with plastic end caps on both sides, or completely in stainless steel. Suitable for top motor.



Canopy Ceiling

Removable aluminium cover in RAL 9006 or 9010, with plastic end caps on both sides, or completely in stainless steel. Suitable for top or rear engine.

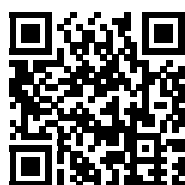


Canopy Cove

Removable aluminium cover in RAL 9006 or 9010, with plastic end caps on both sides, or completely in stainless steel. Suitable for top or rear engine.

Canopy

- Detachable canopy type Low, High, Ceiling, or Cove. Made from aluminium RAL 9006 or 9010, with a plastic headboard on either side or completely made of stainless steel.



Find out more on the ASSA ABLOY SL Hygienic Medicare Intelligence product page!



This equipment should be installed, regularly inspected, maintained and serviced by trained and authorized personnel. Preventive maintenance plans are highly recommended for a proper and safe operation. Talk to your ASSA ABLOY Entrance Systems representative to learn more about our service offering!