

Healthcare sliding doors

ASSA ABLOY SL Hygienic Medicare EI1



Experience a safer
and more open world



What is your top priority in case of an unexpected fire?
Indeed, buying enough time to get people to safety!

With this in mind, we supply the 30 or 60-minute fire-resistant ASSA ABLOY SL Hygienic Medicare EI1: the first hermetically sealing sliding door system with the highest EI1 standard according to EN 1634-1 & smoke resistant according to EN 1634-3.

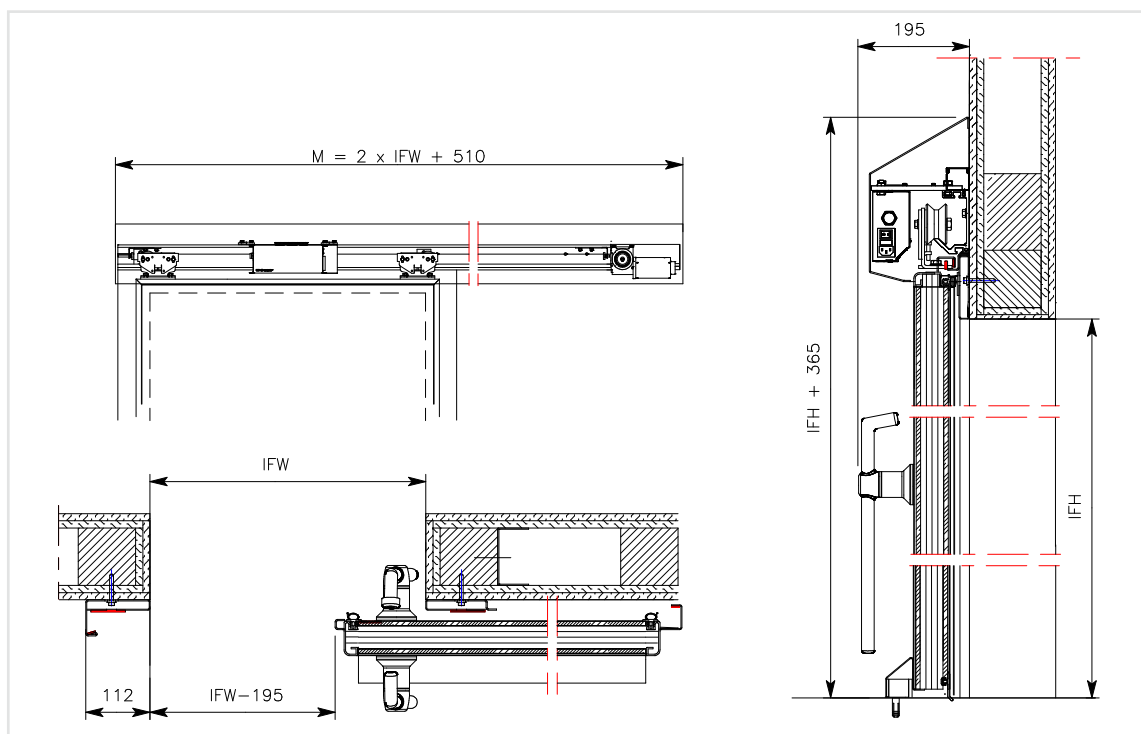
EN 1634-1 is the European standard for fire resistance of doors. The EI1 classification is awarded after intensive testing has been carried out to ensure that the door stops flames (E), does not overheat (I), and does not release too much heat (W).

The Medicare EI1 is the reliable door system for environments with high fire safety requirements, such as operating rooms, intensive care, X-ray rooms, pharmacies, and emergency care.

Product overview

< >	Automated sliding door
✋	Hygienic flush finish
↕	Air permeability according to EN 1026/12207 class 4 (D)
🔊	Smoke resistant according to EN 1634-3
🔥	Fire-resistant according to EN 1634-1
🔊	Noise reducing up to 33 dB
☢	Radiation-resistant version also available
CE	CE marked

A =	Automatic
M =	Manually
IFW =	Inside frame width
IFH =	Inside frame height



Automation (optional)

- Equipped with powerful and reliable automation.
- Automation consisting of a motor, drive and controller is concealed under the cover. The opening and closing time is variably adjustable up to 0.8 m/s. Equipped with obstacle protection in the reveal opening. The system complies with machine guidelines and is compatible with EN16005 safety regulations. Comes standard with human passage and lock function with up to three other doors.
- Various options for operation and protection available.

Certificates

- Highest classifications based on air permeability according to: EN 1026/12207 class 4 (D). 30 or 60 min. fire resistant according to EN 1363-1:2012-10 and EN 1634-1:2014-03, classifications E, EI1, EI2, EW (30 and 60 minutes).
- Hot (S200) and cold (Sa) smoke resistant according to EN 1634-3:2004 and EN 13501-2, class C5 according to EN 1191:2012.
- CE marked according to Machinery Directive 2006/42/EC, Low Voltage Directive 2014/35/EC, EMC Directive 2014/30/EC.
- Noise-reducing up to $Rw = 33$ dB (door leaf value) and $Rw'p = 31$ dB (practice value), according to ISO10140-1:2021 and ISO 717-1:2020.

Dimensions

Inside frame width: 800 to 2,000 mm
Inside frame height: 2,100 to 2,700 mm
Door leaf thickness: 60–65 mm

Technical specifications

Door leaf: The door leaf has a thickness of 60–65 mm, has a fire-resistant core with an MDF barrier layer on both sides and is finished with 0.7 mm high pressure laminate, and is finished with high-pressure laminate on both sides. The aluminium border has rounded corners and is flush with the door leaf.

Seal: All around, the door leaf is finished with a high quality and easily replaceable EPDM sealing profile. When closed, the rubber is pressed against the frame and floor for a complete air and smoke-tight seal. A heat-responsive material has been applied parallel to the seal profile. This guarantees a good seal in the event of fire.

Rail: Low-noise aluminium rail construction with indentation, type MF5. The placement of the nylon wheels on the rails prevents the adherence of dirt and wear.

Options

Various options for operation and protection
Various window and blind options up to 850 x 850 mm
Lead lining 1–3 mm
Medical grounding: potential equalisation or insulated
Imagined foil

Options for operation

Automatic



MS1 contactless switch

Non-contact motion sensor based on radar technology.



MS2 Contactless Switch

Non-contact motion sensor with LED operation.



ES1 Elbow Switch

Nylon switch for opening automatic doors.



ES2 Elbow Switch

Nylon switch with stainless steel front for opening automatic doors.



VS2 Foot Switch

Stainless steel foot switch for opening automatic doors.



VS3 Foot Switch

Motion sensor for non-contact opening of automatic doors.

Operation

- Stainless-steel inside/outside opener with lever mechanism, allowing for the door to be opened effortlessly.

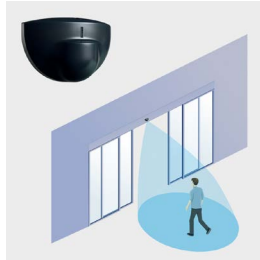
Options for security & windows

Detection sensors



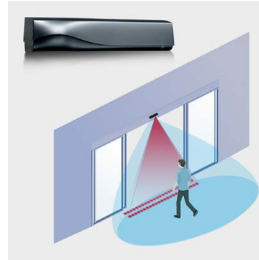
Security Sensor (infrared)

The security sensor uses the 3-dimensional infrared curtain to protect against contact with the doors.



Opening sensor (radar)

Opening sensor for automatic doors. Useful when the switch must not be touched for reasons of hygiene or comfort.



Presence sensor (infrared + radar)

This sensor combines radar technology for the activation of the door with infrared technology for security. nless steel inner-outer opener with lever principle.

Window blindings



Vertical blinds

Changes the glass from transparent to darkened by means of blinds that are incorporated into the glass. Available in white, light grey or grey.



Cellular shades

Creates privacy by means of double pleated curtain in the glass that can be closed (electrically).



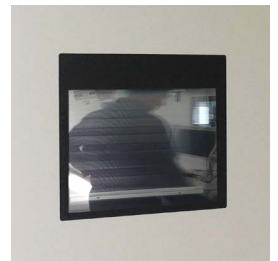
Smart Glass

A switchable glass panel that can change from matte to transparent and vice versa at the push of a button.



Laser resistant curtain/ glass

Protect people from harmful laser beams by means of a built-in laser-resistant curtain or laser-resistant glass.



Options windows

400 x 400 mm
300 x 600 mm
600 x 600 mm

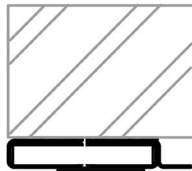
Other dimensions available on request

Maximum glass size
clear view 850 x 850 mm

Slat blinds, manual or electric

Smart Glass

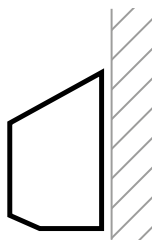
Options frames



Medicare EI1

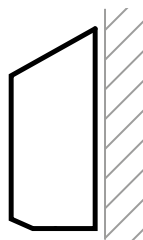
Fire-retardant frame, with three-sided labyrinth, brushed stainless steel. A heat-responsive material is applied to the frame.

Options canopies



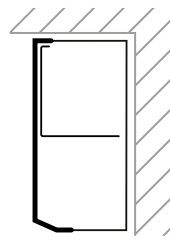
Canopy Low

Sloping, removable aluminium cover in RAL 9006 or 9010, with plastic end caps on both sides, or completely in stainless steel. Suitable for rear engine.



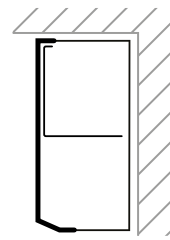
Canopy High

Sloping, removable aluminium cover in RAL 9006 or 9010, with plastic end caps on both sides, or completely in stainless steel. Suitable for top motor.



Canopy Ceiling

Removable aluminium cover in RAL 9006 or 9010, with plastic end caps on both sides, or completely in stainless steel. Suitable for top or rear engine.

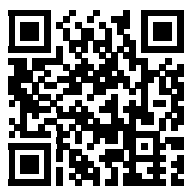


Canopy Cove

Removable aluminium cover in RAL 9006 or 9010, with plastic end caps on both sides, or completely in stainless steel. Suitable for top or rear engine.

Canopy

- Detachable canopy type Low, High, Ceiling, or Cove. Made from aluminium RAL 9006 or 9010, with a plastic end caps on either side or completely made of stainless steel.



Find out more on the ASSA ABLOY SL Hygienic Medicare EI1 product page!



This equipment should be installed, regularly inspected, maintained and serviced by trained and authorized personnel. Preventive maintenance plans are highly recommended for a proper and safe operation. Talk to your ASSA ABLOY Entrance Systems representative to learn more about our service offering!