

# ASSA ABLOY VERSAMAX ICU

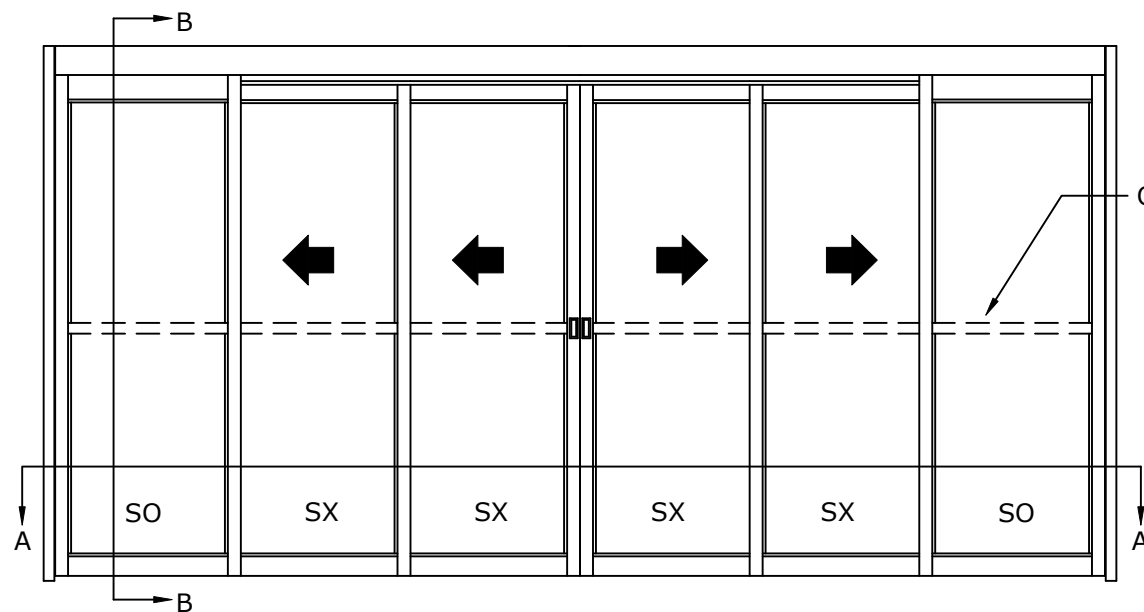
OVERHEAD CONCEALED FULL BREAKOUT TRACKLESS BI-PART  
NARROW STILE TELESCOPIC EQUAL PANEL SLIDING DOOR SYSTEM

U.S. PATENT  
8,096,342 B2

### DIMENSIONS FOR 1/4" [6.4] GLASS

MODEL NO.	OVERALL FRAME WIDTH (A)	CLEAR DOOR OPENING (B)	BREAKOUT OPENING (C)	ACTIVE & SIDELITE LEAF WIDTH (D)	ROUGH OPENING WIDTH (E)
VMT6FBO-10	120" [3048.0]	61 13/16" [1569.6]	96 1/2" [2451.1]	21 1/16" [535.0]	120 1/2" [3060.7]
VMT6FBO-12	144" [3657.6]	77 13/16" [1976.0]	120 1/2" [3060.7]	25 1/16" [636.6]	144 1/2" [3670.3]
VMT6FBO-14	168" [4267.2]	93 13/16" [2382.4]	144 1/2" [3670.3]	29 1/16" [738.2]	168 1/2" [4279.9]
KEY:		(2*A/3)-18 3/16" (2*A/3)-[462.4]	A-23 1/2" A-[596.9]	(A/6)+ 1 1/16" (A/6)+[27.0]	A+1/2" A+[12.7]

CONSULT FACTORY FOR ALL CUSTOM CONFIGURATION SIZES OR SIZES OVER 12'.



BREAKOUT SIDE

SCALE - 1:30

OVERHEAD —  
SUPPORT REQUIRED

1/4" [6.3]  
SHIM, CAULK  
AND USE  
APPROPRIATE  
FASTENERS

ACCESS  
COVER

ROH  
STD. HT.  
90"  
[2286.0]

FINISHED FLOOR  
MUST NOT BE  
CONCAVE ACROSS  
THE CLEAR  
DOOR OPENING  
AND NOT OUT OF  
LEVEL MORE THAN 1/8"

ACTIVE LEAF  
STD. HT.  
82 3/4"  
[2101.9]

SIDELITE  
STD. HT.  
84 1/4"  
[2140.0]

CDO  
STD. HT.  
84 3/16"  
[2138.4]

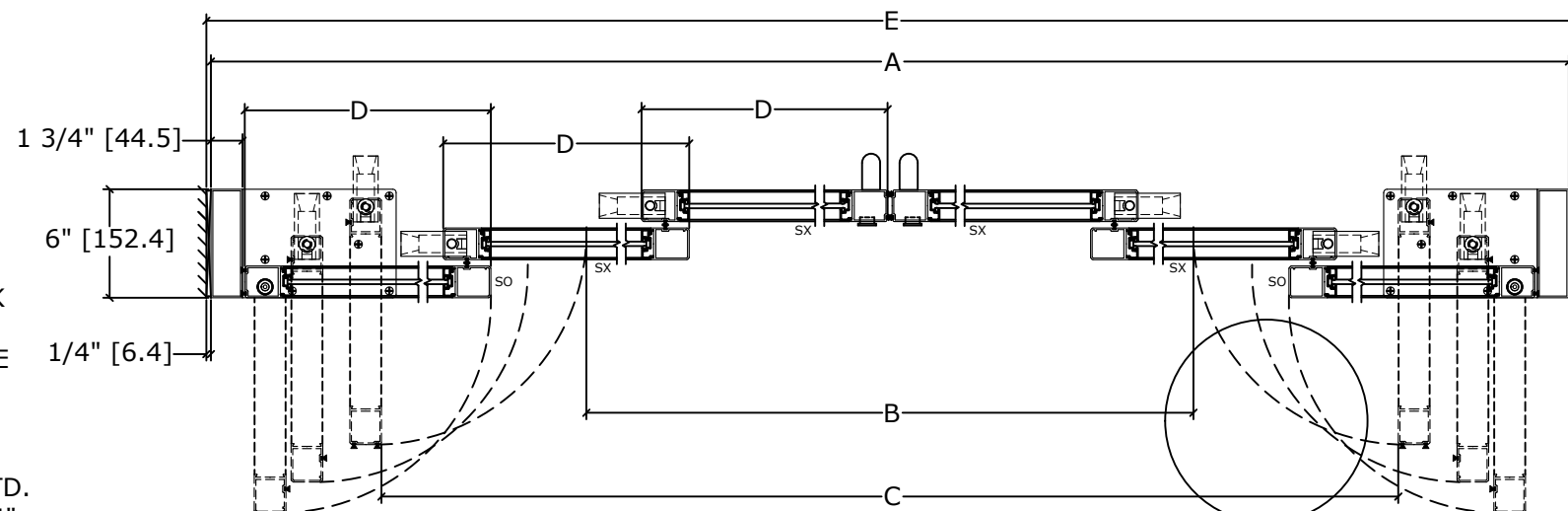
F.F.L.

13/16" ]  
[20.6]

PIVOT PLATE  
SEE DETAIL C

SECTION B-B  
SCALE - 1:5

BREAKOUT SIDE

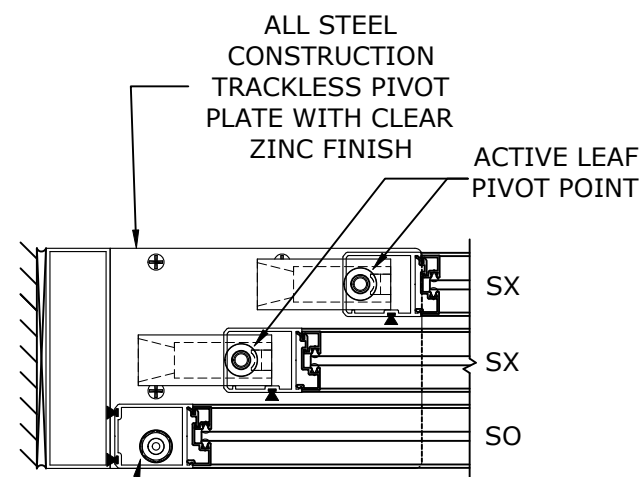


BREAKOUT SIDE

- DOORS WILL ONLY BREAK OUT WHEN IN THE FULLY OPEN POSITION.

SECTION A-A  
SCALE - 1:10

FINISHED  
FLOOR  
MUST NOT BE  
AN INCREASE  
IN ELEVATION  
THROUGH  
BREAKOUT  
DOOR(S)  
PATH



SIDELITE  
PIVOT POINT

DETAIL C  
SCALE - 1:5

BREAKOUT SIDE

REFER TO RELEVANT [LOCAL, STATE, NATIONAL, OR AHJ] BUILDING CODE FOR MIN DOOR HEIGHT & MIN/MAX WIDTH ALLOWABLE FOR EGRESS REQUIREMENT IN CONJUNCTION WITH TABLE.

DWG NO. 1016217

DRN BY	DBN	DATE	10/16/18	CHK BY	CLW	DATE	10/16/18	REV.	4.0	DATE	01/20/22
--------	-----	------	----------	--------	-----	------	----------	------	-----	------	----------

# ASSA ABLOY