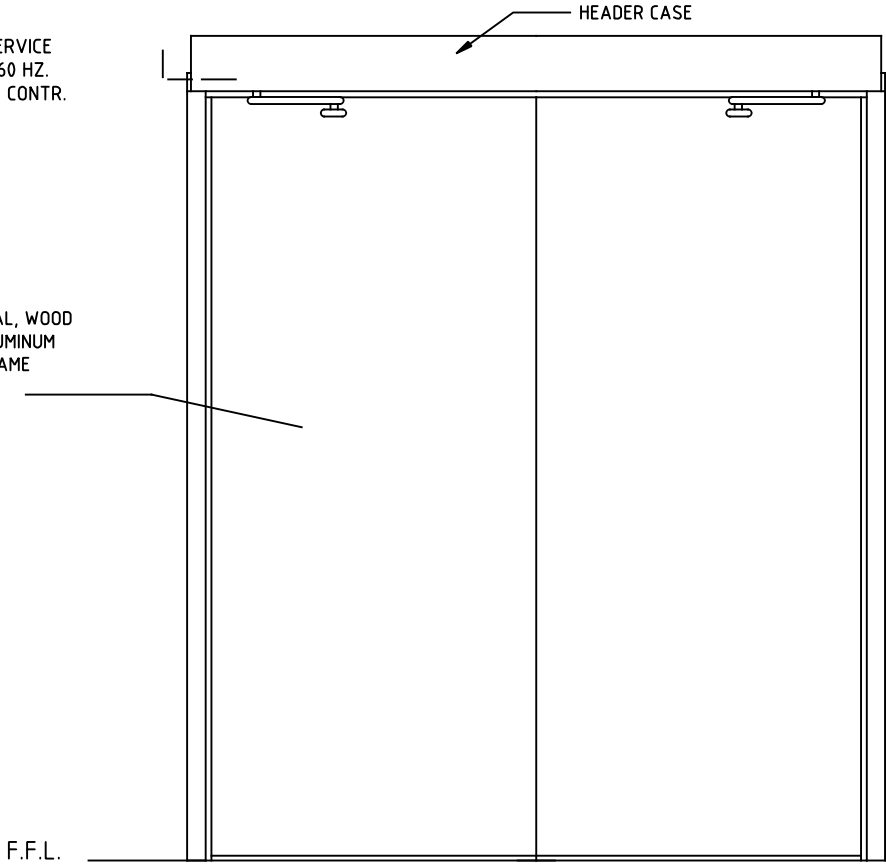
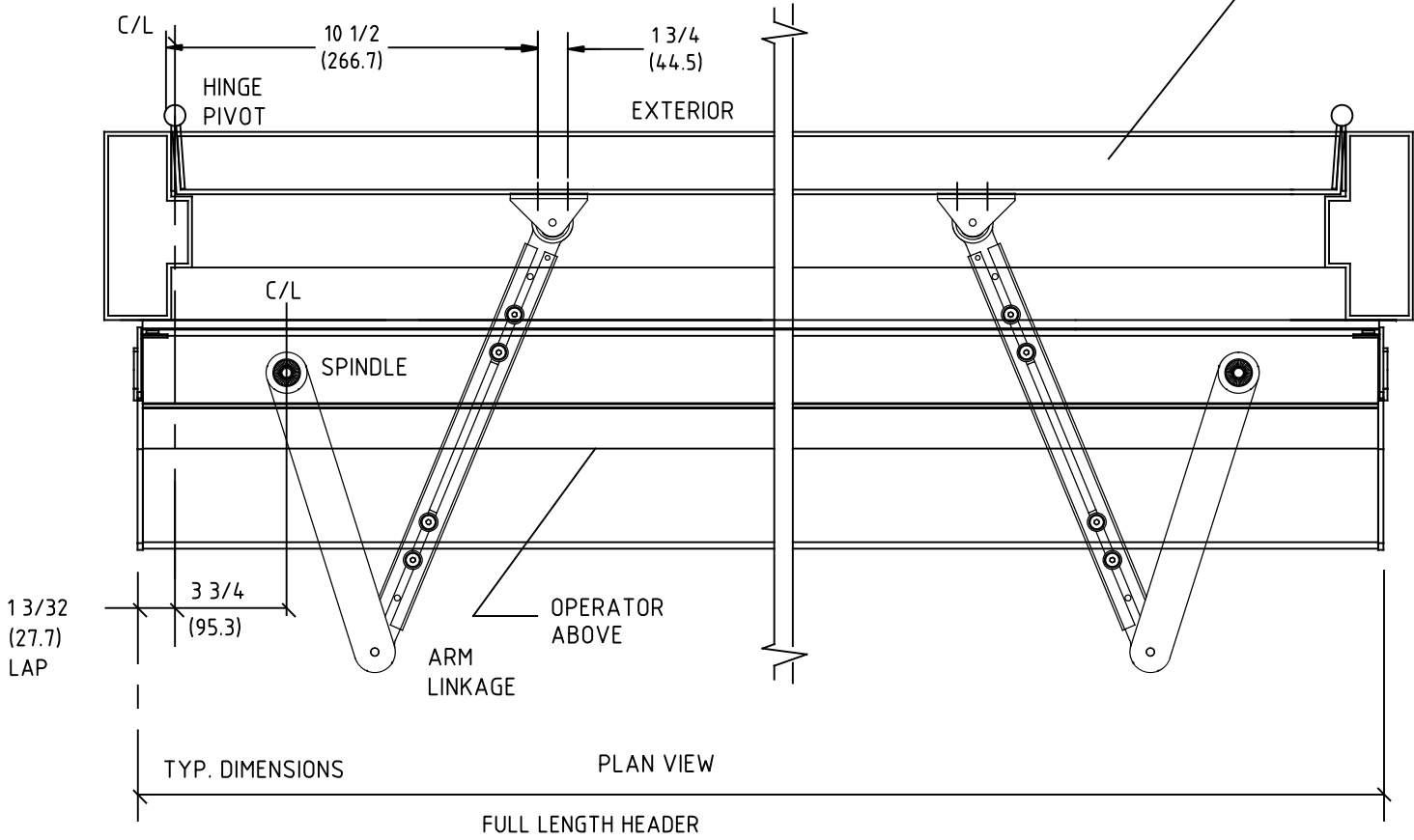


× ELECTRICAL SERVICE
120 VAC. 50/60 HZ.
10A. BY ELEC. CONTR.

HOLLOW METAL, WOOD
FLUSH OR ALUMINUM
DOOR AND FRAME
BY OTHERS.



INTERIOR ELEVATION



FILLER PLATE AS REQUIRED
NON-COMBUSTABLE MATERIAL
IN FIRE DOOR APPLICATION
BY OTHERS

MOUNTING REQUIRED
BY INSTALLER, 12"
(304.6) ON CENTERS.

DRYWALL
BY OTHERS

WOOD OR STEEL
STUDS BY OTHERS

" PUSH ARM "

SHOE SHOULD BE
MOUNTED TO DOOR USING
#1/4-20 BINDING HEAD POST
SCREWS (SEX BOLTS).
ALUMINUM DOORS CAN USE
BLIND RIV-NUTS OR SEX BOLTS.
HARDWARE FOR DOOR
BY INSTALLER.

HOLLOW METAL, WOOD
FLUSH OR ALUMINUM
DOOR AND FRAME
BY OTHERS.

INTERIOR

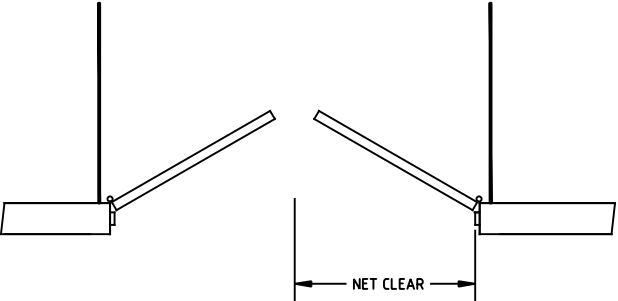
F.F.L.

NOTE:

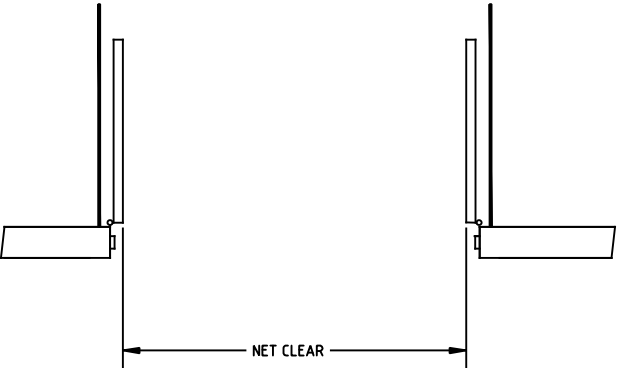
SW200i is DESIGNED FOR HIGH PERFORMANCE, HEAVY
USAGE PEDESTRIAN APPLICATIONS THAT COMPLY WITH
ANSI A156.10. THE OPERATOR CAN ALSO BE ADJUSTED
FOR LOWER MANUAL PUSH FORCES TO COMPLY WITH
ANSI 156.19 AND FIRE DOOR REGULATIONS.

STANDARD FINISH:
CLEAR - AA-C23-A31.
DARK BRONZE - AA-C23-A44
SPECIAL FINISHES ARE AVAILABLE

NOTE: DRAWING IS DIMENSIONED IN BOTH ENGLISH
AND METRIC. REF. AS FAOLWS: 1: (25.4).
ALL METRIC SIZES ARE IN MILLIMETERS.



NOTE: ×
NET CLEAR (EGRESS MIN 32" (812.8)) SINGLE DOOR



NOTE: ×
SINGLE DOOR WIDTH NOT LESS THAN 30".

ENCROACHMENT OF 4" INTO NET CLEAR BY
PANIC HARDWARE IS PERMITTED ABOVE 34".

× GUIDE RAILS (SHOWN) ARE REQUIRED ON THE
SWINGPATH SIDE OF POWER OPERATED PEDESTRIAN
DOORS (ANSI 156.10) BUT NOT ON LOW ENERGY
POWER OPERATED DOORS (ANSI 156.19).

DWG NO.		1015925									
DRN BY	MHW	DATE	10/27/16	CHK BY	SS	DATE	10/27/16	REV.	2.0	DATE	1/17/18
<div></div> <div></div> <div></div> <div></div> <div></div> <div></div>											
ASSA ABLOY										<div></div> <div></div> <div></div>	