
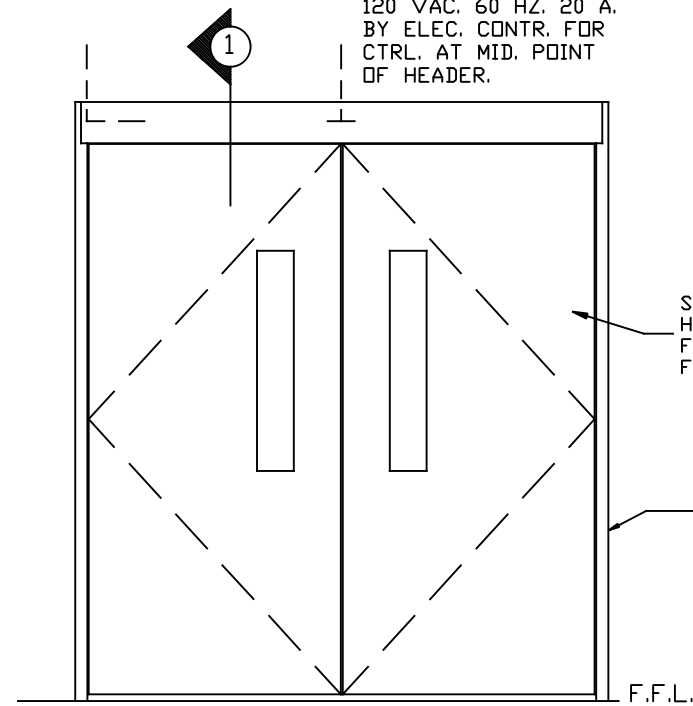
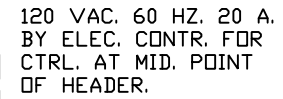


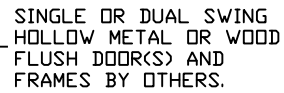
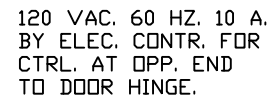
NOTE:

 SW200i IS DESIGNED FOR HIGH PERFORMANCE, HEAVY USAGE PEDESTRIAN APPLICATIONS THAT COMPLY WITH ANSI A156.10. THE OPERATOR CAN ALSO BE ADJUSTED FOR LOWER MANUAL PUSH FORCES TO COMPLY WITH ANSI 156.19 AND FIRE DOOR REGULATIONS.

STANDARD FINISH:
CLEAR - AA-M12C22A41, CLASS 1, .018 MM
DARK BRONZE - AA-M12C22A44, CLASS 1, .018 MM
SPECIAL FINISHES ARE AVAILABLE



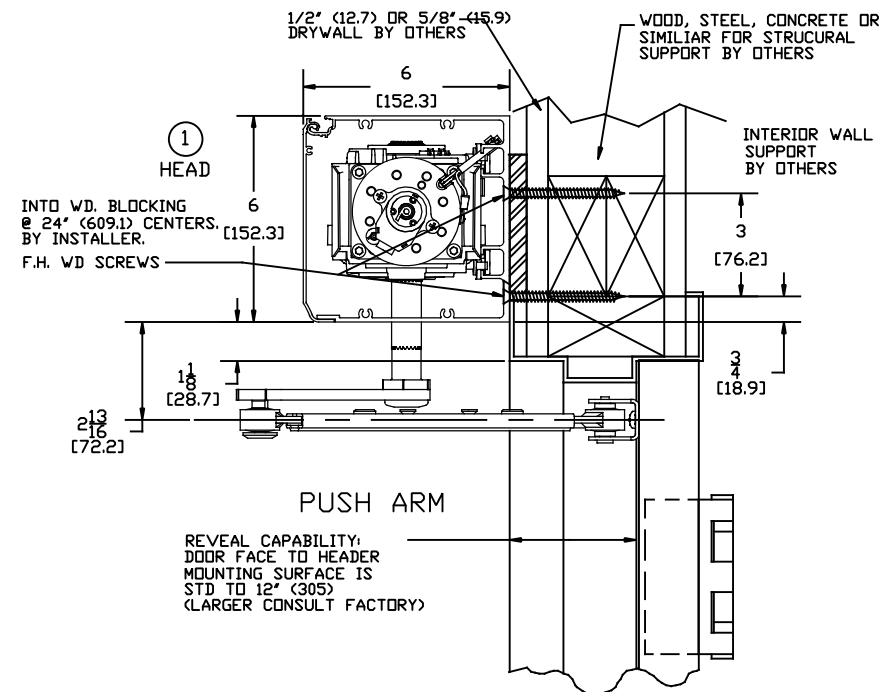
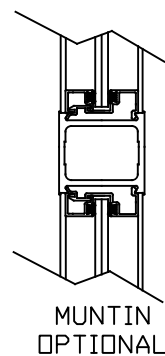
INTERIOR ELEVATION
SW200i SA (DUAL)



— GUIDE RAILS
SEE NOTE: *



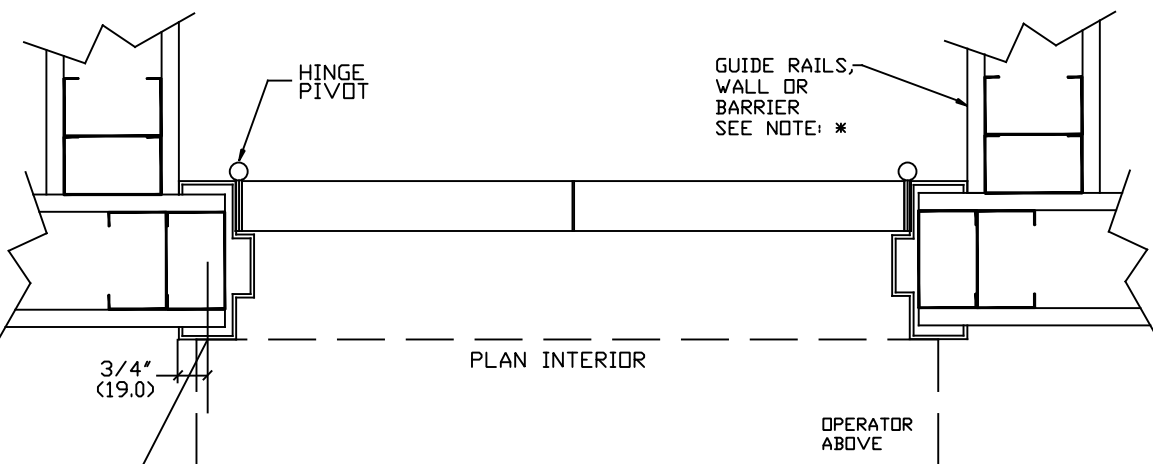
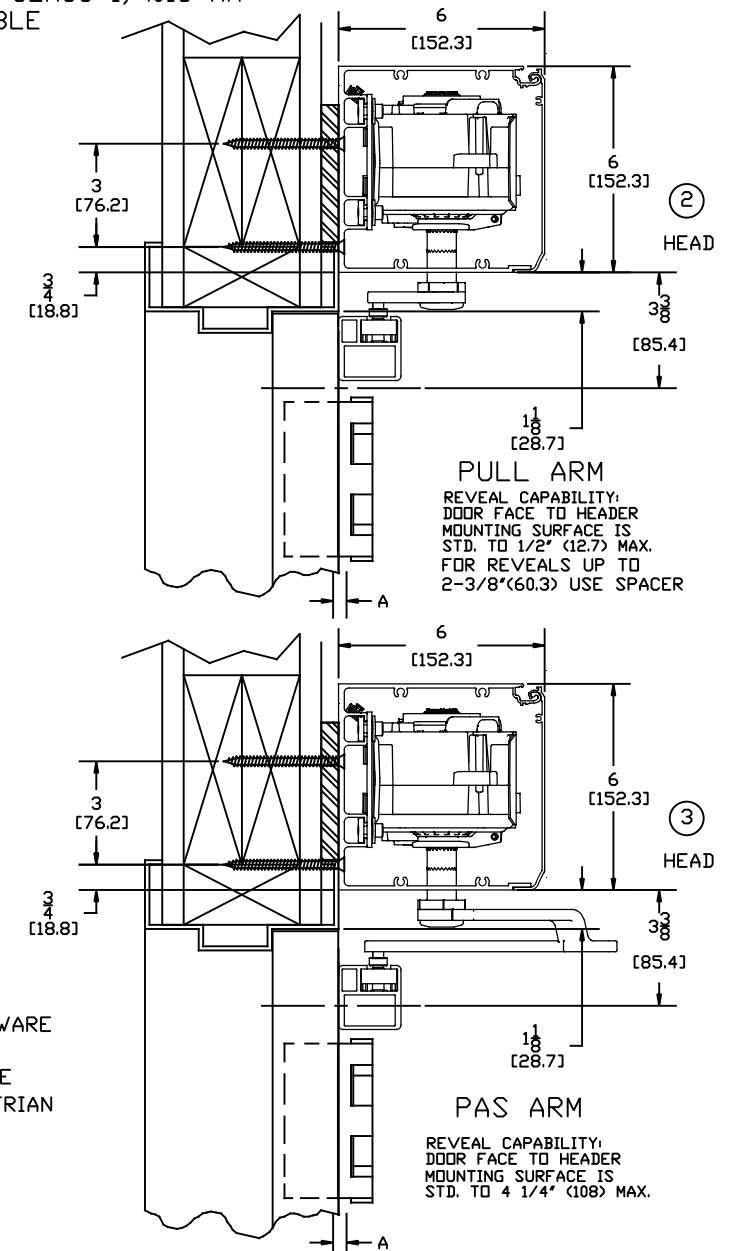
INTERIOR ELEVATION
(L.H. SHOWN/R.H. OPPOSITE)
SW200i SA (SINGLE)



NOTE: *

NET CLEAR (EGRESS MIN 32" (813)) DOOR
OPENING CLEARANCES MAY BE COMPROMISED
BY THE ADDITION OF SURFACE MOUNTED HARDWARE
(SUCH AS PANICS).

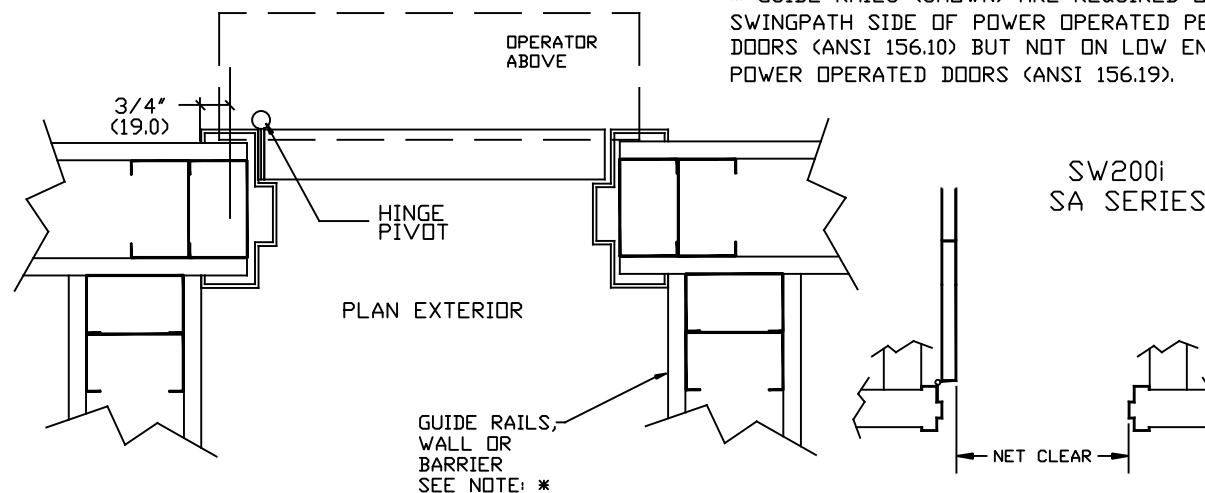
* GUIDE RAILS (SHOWN) ARE REQUIRED ON THE
SWINGPATH SIDE OF POWER OPERATED PEDESTRIAN
DOORS (ANSI 156.10) BUT NOT ON LOW ENERGY
POWER OPERATED DOORS (ANSI 156.19).



3/4" -
(19.0)

PLAN INTERIOR

OPERAT
ABOVE



PLAN EXTERIOR

GUIDE RAILS;
WALL OR
BARRIER
SEE NOTE: *

SW200i
SA SERIES

- RIVNUTS ARE PROVIDED.
DRILL TWO 11/32" (8.7) DIA.
HOLES AND C'SINK 17/32"
(13.5) DIA. X 90° IN DOOR
FOR RIVNUTS BY INSTALLER.

DWG NO.		1009986									
DRN BY	SS	DATE	12/14/12	CHK BY	JAW	DATE	12/14/12	REV.	4.0	DATE	1/18/18
<div><div></div><div></div><div></div><div></div><div></div><div></div><div></div></div>											
<div><div>ASSA ABLOY</div></div>						<div><div></div><div></div><div></div><div></div></div>					