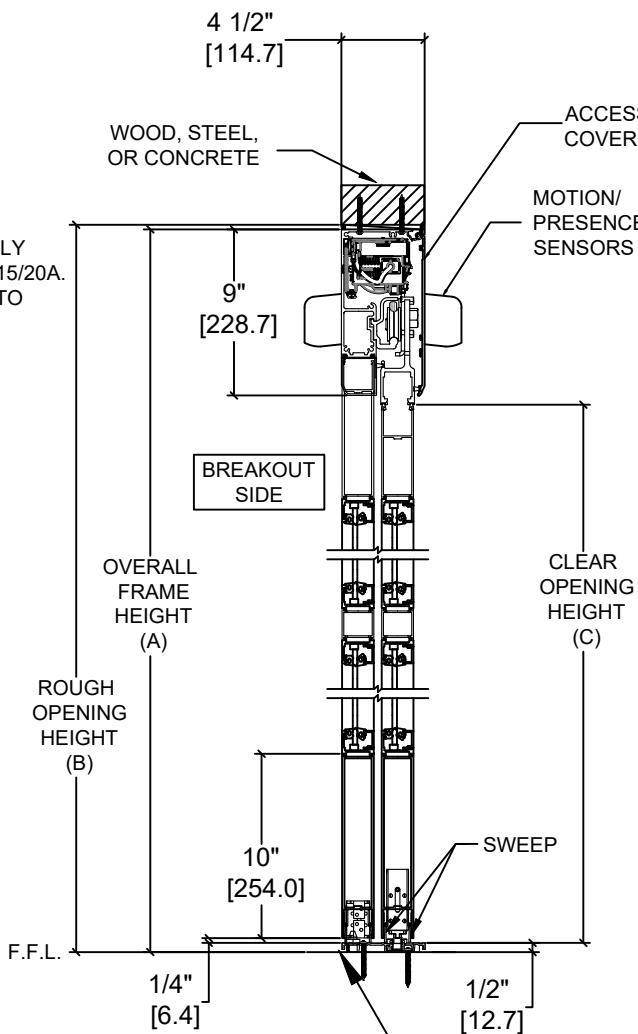
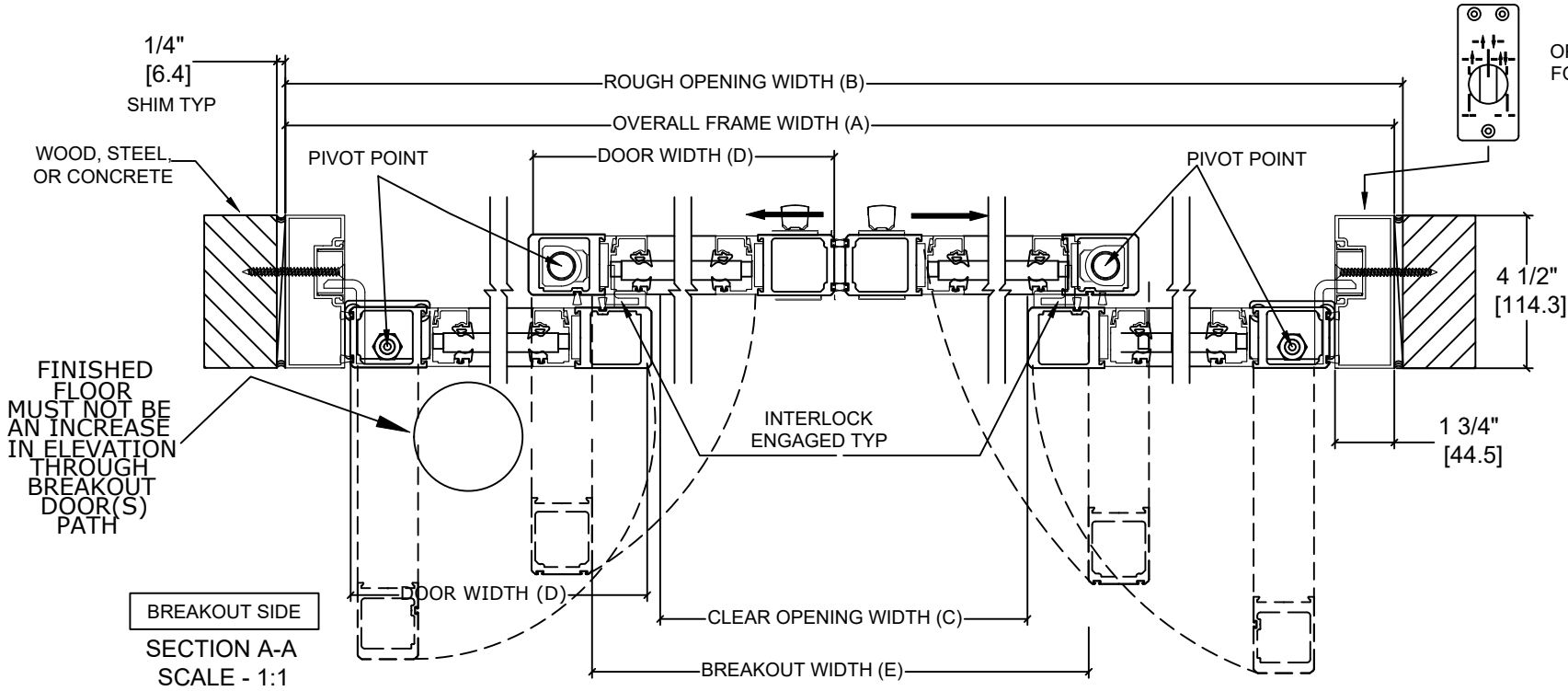
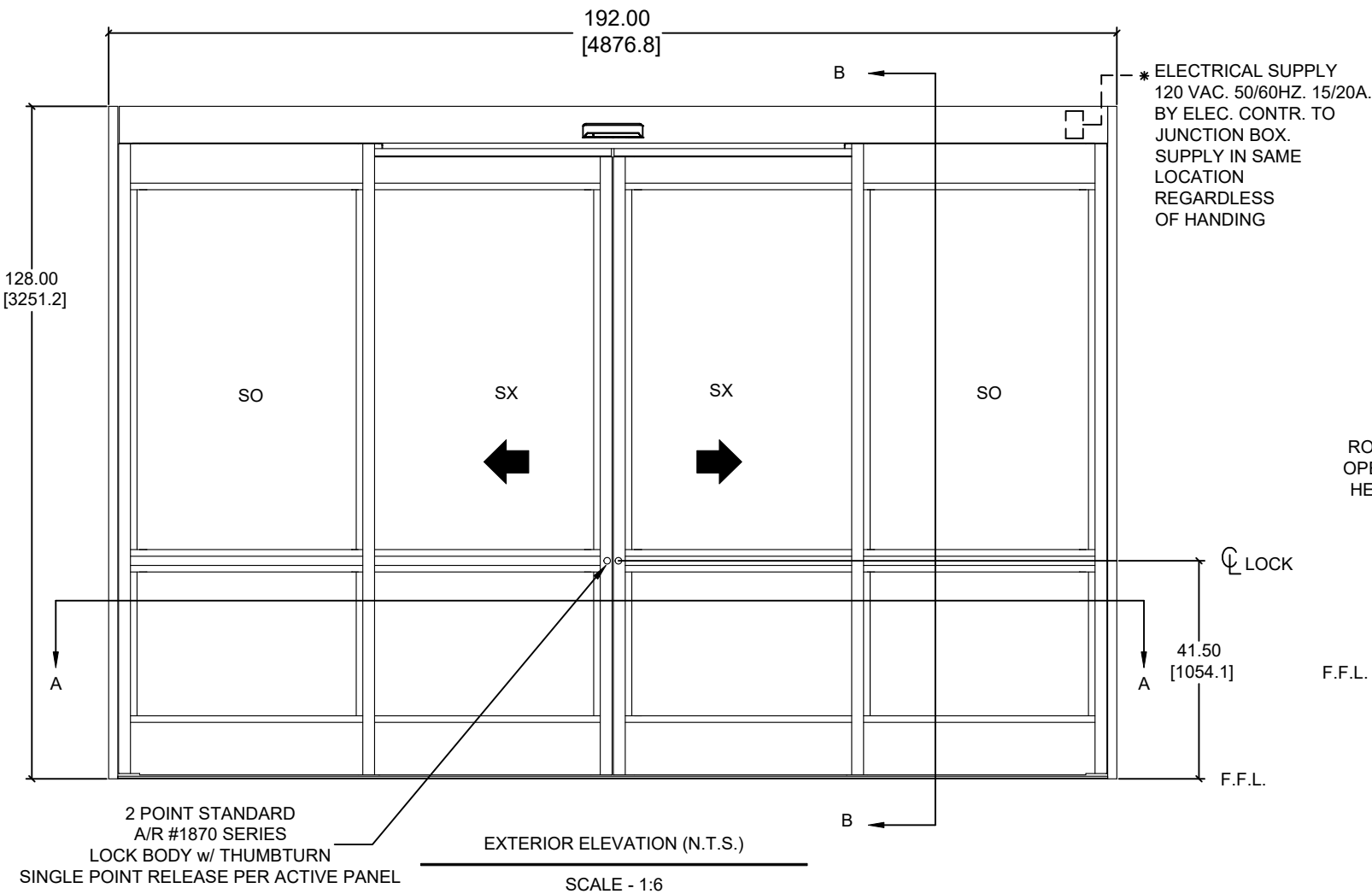


Overhead Concealed, Narrow Stile, Full Breakout, Bi-Part,
Non-Impact



SECTION B-B
SCALE - 1:2

FINISHED FLOOR
MUST NOT BE
CONCAVE ACROSS
THE CLEAR
DOOR OPENING
AND NOT OUT OF
LEVEL MORE THAN 1/8"
(TYP)

	OVERALL FRAME WIDTH (A)	ROUGH OPENING (B)	CLEAR OPENING (C)	DOOR WIDTH (D)	BREAKOUT WIDTH (E)
AT MAX WIDTH	192" [4876.8]	192 1/2" [4889.5]	82 1/8" [2086.0]	48 5/8" [1235.1]	175 9/16" [4459.3]
WIDTH FORMULA	B - 1/2" B - [12.7]	A + 1/2" A + [12.7]	A/2 - 13 7/8" A/2 - [352.4]	A/4 + 5/8" A/4 + [15.9]	A - 16 7/16" A - [417.5]
AT MAX HEIGHT	128" [3251.2]	128 1/4" [3257.6]	118" [2997.2]		
HEIGHT FORMULA	B - 1/4" B - [6.35]	A + 1/4" A + [6.35]	A - 10" A - [254.0]		

TWO-PANE GLASS FORMULA (STANDARD)
TOP LITE: OFW /4 - 4 3/4 [120.7] X OFH - 58 7/8 [1,495.43]

BOTTOM LITE: OFW /4 - 4 3/4 [120.7] X 29 1/2 [749.3]

STANDARD PACKAGE CONSISTS OF:

- STANDARD FINISH:
CLASS 1, .018MM, CLEAR- AA-M12C22A41
CLASS 1, .018MM, DARK BRONZE- AA-M12C22A44
AUTOMATIC OPERATOR
NARROW STILE RAILS
LOWER MUNTINS, SEE SHEET AA-44 FOR DETAILS
THRESHOLD
2-POINT LOCK WITH LOCK INDICATOR
1/4" [6mm] TEMPERED GLASS
DRY GLAZED
MOTION/PRESENCE SENSORS
5-POSITION KNOB SWITCH
BALL CATCH
DUAL CONCEALED SWEEPS IN SX & SO PANELS
10" BOTTOM RAILS, SEE SHEET AA-44 FOR DETAILS

OPTIONS AVAILABLE:

- SPECIAL FINISHES
· THRESHOLD LEAD-UP SEE SHEET AA-30 FOR DETAILS
· UPPER MUNTINS, SEE SHEET AA-44 FOR DETAILS
· SEE SHEET OS-10 FOR ALL OTHER OPTIONS

FOR MAXIMUM CURRENT DRAW, SEE PRODUCT SPECIFICATION,
INSTALLATION INSTRUCTIONS, OR THE UL LABEL ON THE EQUIPMENT.

TEST PROTOCOLS: TAS 201, TAS 202 & TAS 203
FLORIDA PRODUCT APPROVAL # 30356
MIAMI-DADE NOA #21-0324.13

REFER TO RELEVANT [LOCAL, STATE, NATIONAL, OR AHJ] BUILDING CODE FOR MIN DOOR HEIGHT & MIN/MAX WIDTH ALLOWABLE FOR EGRESS REQUIREMENT IN CONJUNCTION WITH TABLE.

DESIGN PRESSURE RATING	
WHERE WATER INFILTRATION REQUIREMENT IS NEEDED	WHERE WATER INFILTRATION REQUIREMENT IS NOT NEEDED
NOT APPROVED	+/- 55 PSF*

PSF RATINGS RANGE FROM 55-112 PSF DEPENDENT ON PACKAGE WIDTH & HEIGHT. FOR SPECIFIC RATINGS CONSULT PRODUCT APPROVALS OR PSF/SIZE CALCULATOR ON PRODUCT WEBPAGE.

DIMENSIONS ARE IN INCHES [mm]

DWG NO. 1019931					
DRN BY	CAP	DATE	03/30/20	CHK BY	SF
				DATE	5/13/20
				REV.	5.0
				DATE	1/21/22

