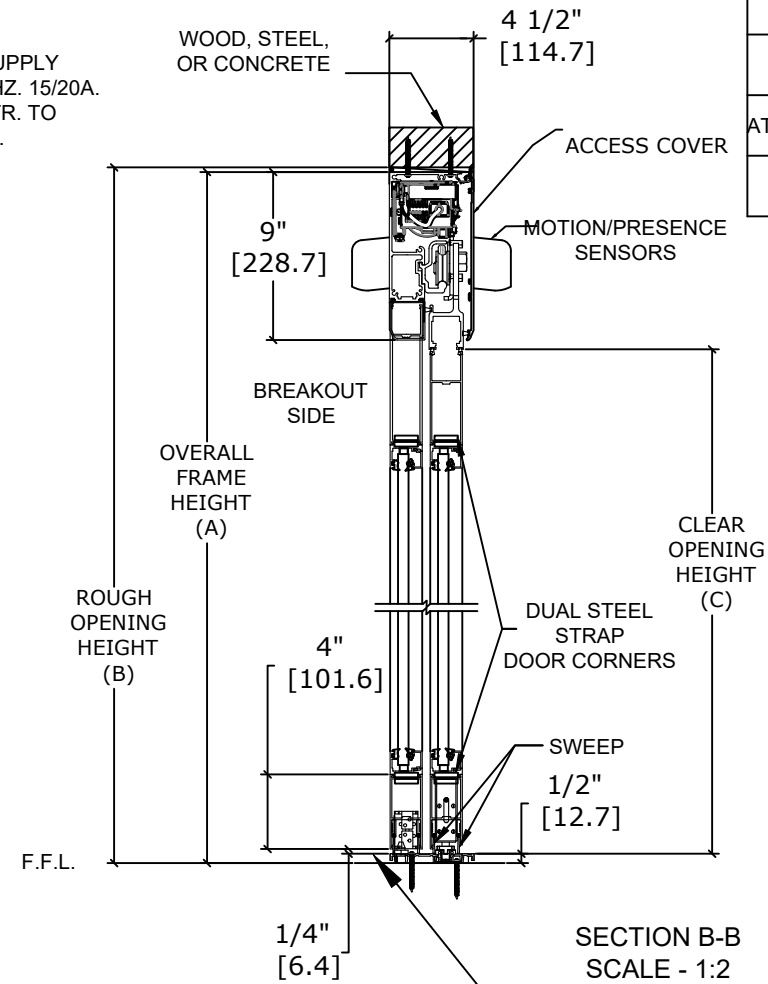
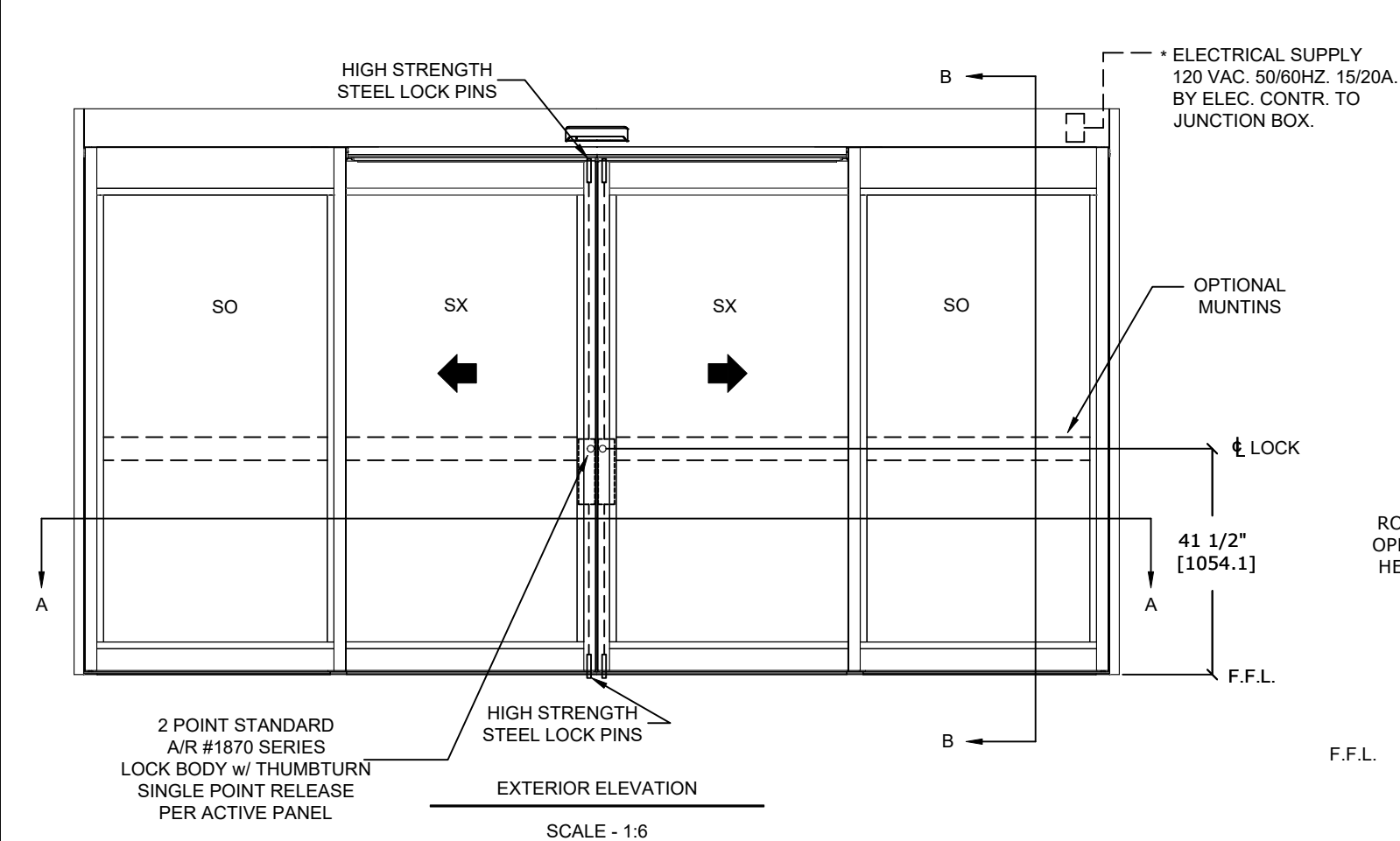


**ASSA ABLOY SL500**  
**Forced Entry Resistant Slider**  
 Overhead Concealed, Narrow Stile, Full Breakout, Bi-Part  
 Impact Resistant



	OVERALL FRAME WIDTH (A)	ROUGH OPENING (B)	CLEAR OPENING (C)	DOOR WIDTH (D)	BREAKOUT WIDTH (E)
AT MAX WIDTH	192" [4876.8]	192 1/2" [4889.5]	81 5/8" [2060.6]	48 5/8" [1235.1]	175 9/16" [4459.3]
WIDTH FORMULA	B - 1/2" A - [12.7]	A + 1/2" A + [12.7]	A/2 - 13 7/8" A/2 - [352.4]	A/4 + 5/8" A/4 + [15.9]	A - 16 7/16" A - [417.5]
AT MAX HEIGHT	104" [2641.6]	104 1/4" [2648.0]	94" [2387.6]		
HEIGHT FORMULA	B - 1/4" B - [6.35]	A + 1/4" A + [6.35]	A - 10" A - [254.0]		

GLASS FORMULA: OFW /4 - 4 6/8 [120.7] X OFH -20 1/2 [520.70]

NOTES:

STANDARD PACKAGE CONSISTS OF:

- STANDARD FINISH:  
CLASS 1, .018MM, CLEAR- AA-M12C22A41
- CLASS 1, .018MM, DARK BRONZE- AA-M12C22A44
- AUTOMATIC OPERATOR
- NARROW STILE RAILS
- THRESHOLD
- 2-POINT LOCK WITH LOCK INDICATOR
- 9/16" GLASS STOPS AND BLOCKS  
1/4" HS - .090" DUPONT SENTRYGLAS PLUS® - 1/4" HS
- DRY GLAZED
- MOTION/PRESENCE SENSORS
- 5-POSITION KNOB SWITCH
- BALL CATCH
- DUAL CONCEALED SWEEPS IN SX & SO PANELS
- 4" BOTTOM RAILS

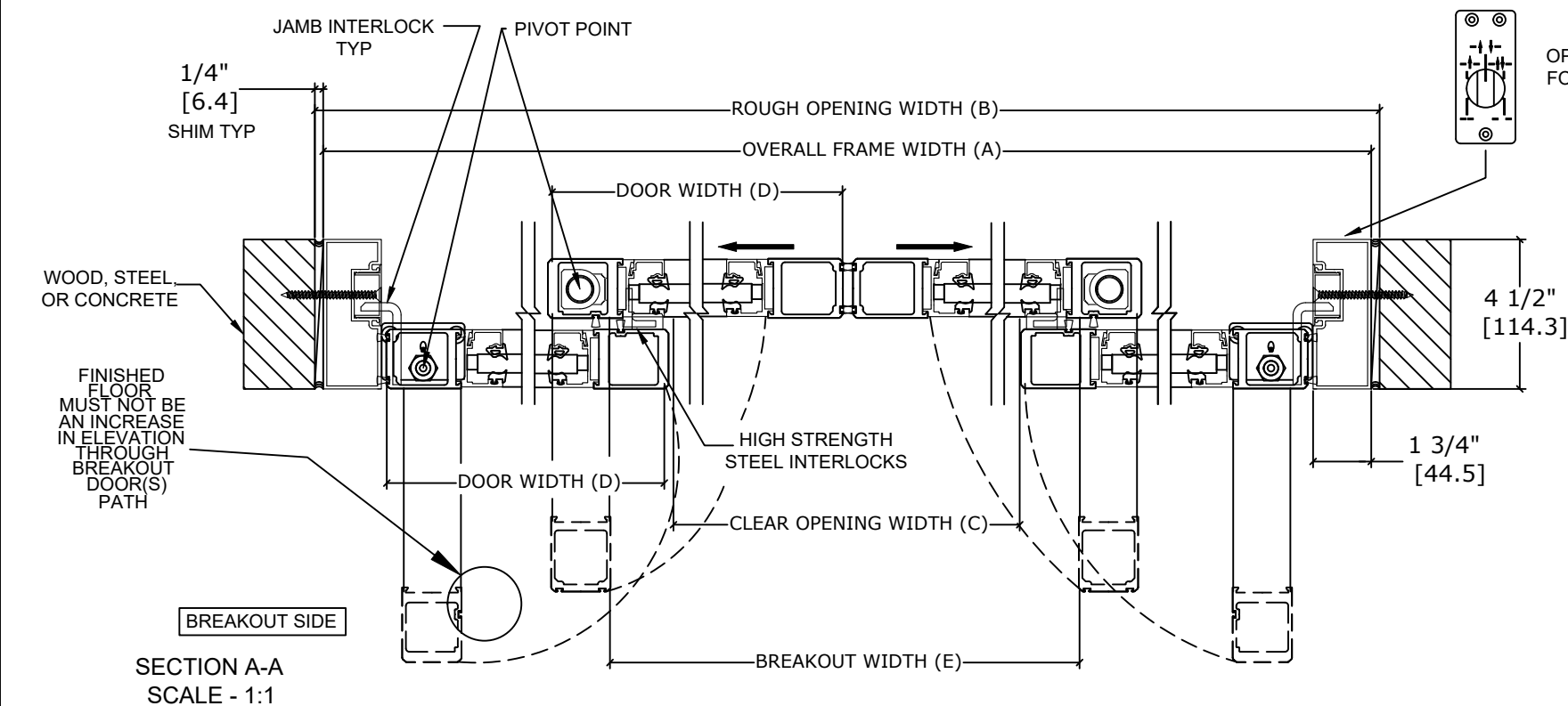
OPTIONS AVAILABLE:

- SPECIAL FINISHES
- PANIC EXIT DEVICE
- 1" IG O.A. LAMINATED GLASS
- $\frac{3}{16}$ " HS - .090" DUPONT SENTRYGLAS PLUS® -  $\frac{3}{16}$ " HS -  $\frac{3}{8}$ " AIR GAP -  $\frac{3}{16}$ " FT
- 7" /10" BOTTOM RAILS
- THRESHOLD LEAD-UP, SEE SHEET AA-30 FOR DETAILS
- TRUE DIVIDED MUNTINS
- FALSE MUNTINS
- SEE SHEET OS-10 FOR ALL OTHER OPTIONS AND OPTION DETAILS

FOR MAXIMUM CURRENT DRAW, SEE PRODUCT SPECIFICATION,  
INSTALLATION INSTRUCTIONS, OR THE UL LABEL ON THE EQUIPMENT.

TEST PROTOCOLS: ASTM F842-17 GRADE 25

REFER TO RELEVANT [LOCAL, STATE, NATIONAL, OR AHJ]  
BUILDING CODE FOR MIN DOOR HEIGHT & MIN/MAX WIDTH  
ALLOWABLE FOR EGRESS REQUIREMENT IN CONJUNCTION  
WITH TABLE.



DWG NO. 1021202				
DRN BY	SJF	DATE	7/8/20	CHK BY
		DATE		REV. 3.0
				DATE 1/21/22
<div> <div>ASSA ABLOY</div> <div> <div></div> <div></div> <div></div> <div></div> </div> </div>				