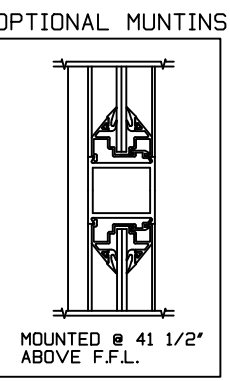
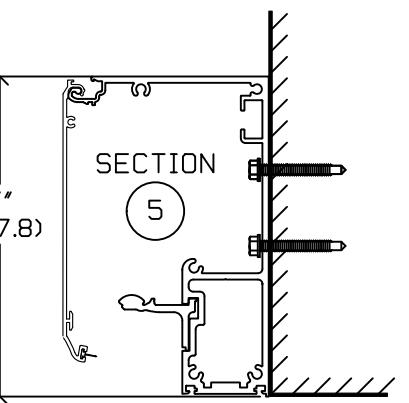
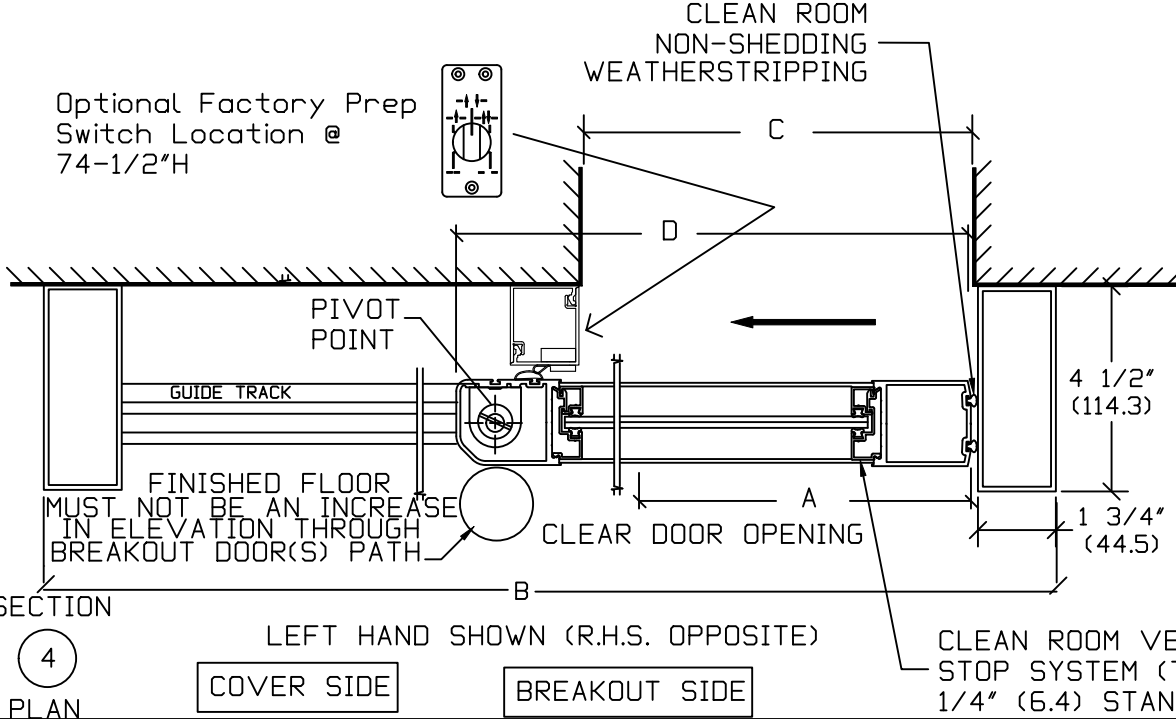
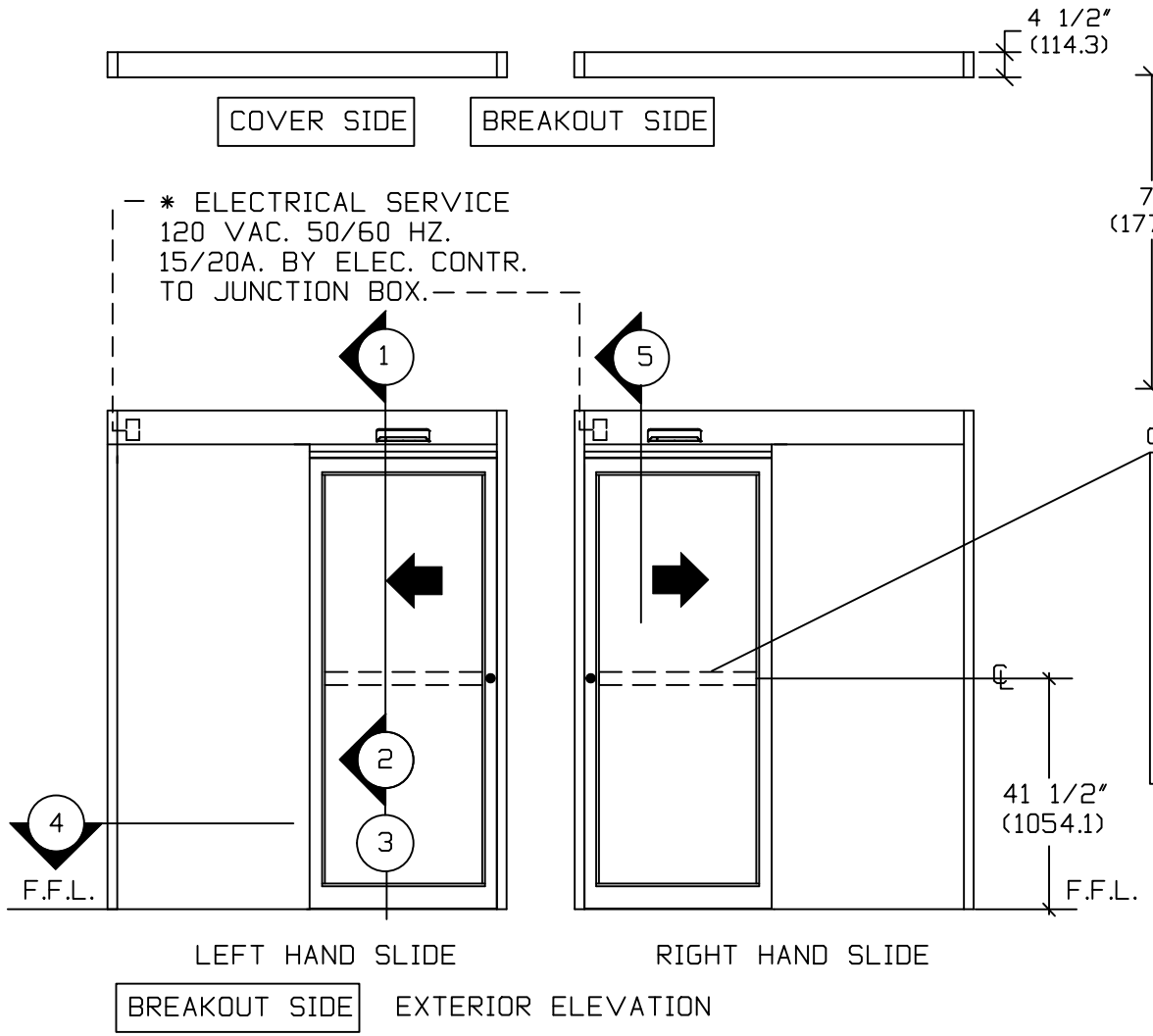


ASSA ABLOY SL500 CLEAN ROOM

SURFACE APPLIED ACTIVE LEAF ONLY

NARROW STILE SINGLE SLIDE DOOR SYSTEM

*PACKAGE MEETS ISO 3 (CLASS 1) REQUIREMENTS



CLEAN ROOM HORIZONTAL BEVELED GLASS STOP SYSTEM (TYP)
1/4" (6.4) STANDARD



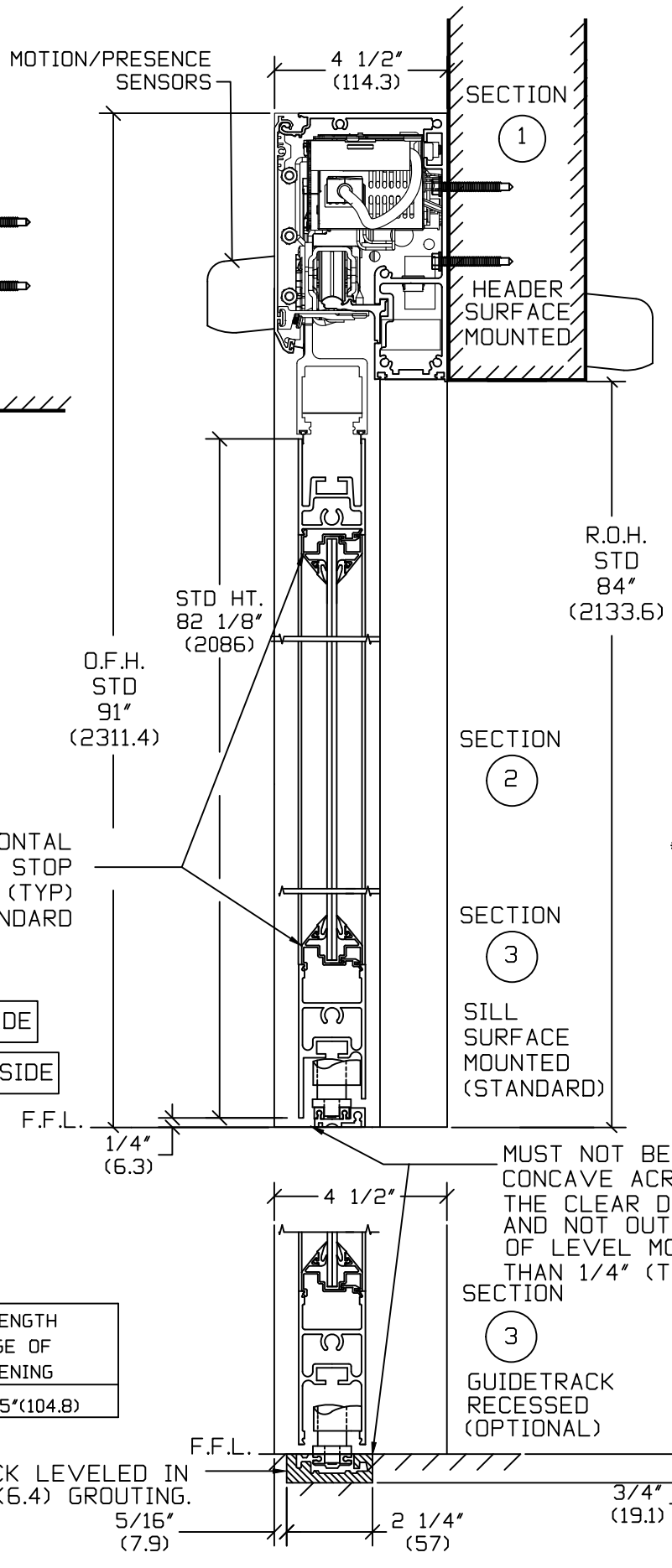
RECESS LENGTH FROM EDGE OF ROUGH OPENING
KEY C+4.125"(104.8)

TRACK LEVELED IN 1/4"(6.4) GROUTING.

5/16" (7.9)

2 1/4" (57)

3/4" (19.1)



NOTE: THE STANDARD PACKAGE CONSISTS OF:
THE AUTOMATIC OPERATOR & NON-SHEDDING WEATHERSTRIP, FRAMES, & DOORS WITH VERTICAL NON-SHEDDING WEATHERSTRIP, EMERGENCY BREAKAWAY. OPTIONAL POSITION SWITCHES (DIGITAL 3 OR 5) OR KEY (5)), (OFF-EXIT ONLY-AUTO-REDUCED OPENING-HOLD OPEN OR OFF, AUTO, HOLD OPEN), MOTION/PRESENCE SENSORS.
OPTIONAL: ELBOW ACTIVATION SWITCH, BESAM ELECTRICAL CARRIAGE LOCK.
STANDARD FINISH: CLEAR- AA-M12C22A41, CLASS 1, .018 MM.
DARK BRONZE- AA-M12C22A44, CLASS 1, .018 MM.
SPECIAL FINISHES ARE AVAILABLE.

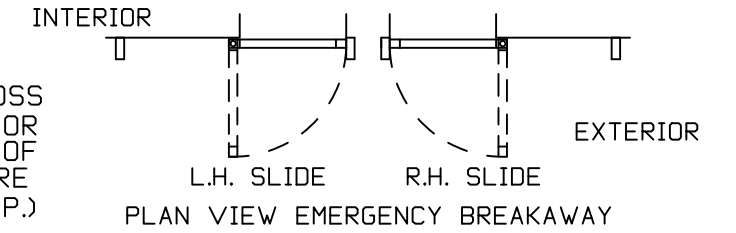
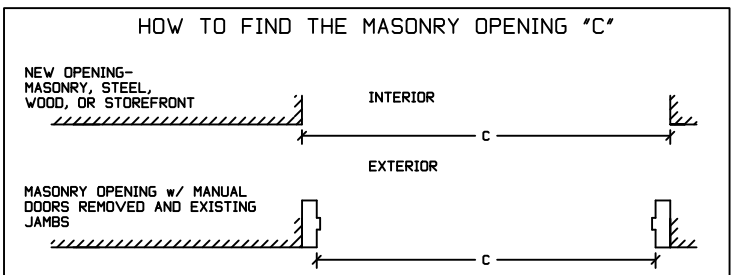
NOTE DRAWING IS DIMENSIONED IN BOTH ENGLISH AND METRIC REF. AS FOLLOWS 1" (25.4) ALL METRIC SIZES ARE MILLIMETERS.
* FOR MAXIMUM CURRENT DRAW PER OPERATOR, SEE PRODUCT SPECIFICATION, INSTALLATION INSTRUCTIONS, OR THE UL LABEL ON THE EQUIPMENT.
REFER TO RELEVANT (LOCAL, STATE, NATIONAL OR AHJ) BUILDING CODE FOR MIN DOOR HEIGHT & MIN/MAX WIDTH ALLOWABLE FOR EGRESS REQUIREMENT IN CONJUNCTION WITH TABLE BELOW.

MASONRY OPENING WIDTH C	ACTIVE LEAF WIDTH D	DOOR OPENING A	OVERALL FRAME HEIGHT	ROUGH OPENING HEIGHT	OVERALL FRAME WIDTH B
36" (914.4)	38 5/8" (981.1)	32 3/8" (822.3)	91" (2311.4)	84" (2134)	78 1/4" (1987.6)
42" (1066.8)	44 5/8" (1133.5)	38 3/8" (974.7)	91" (2311.4)	84" (2134)	90 1/4" (2292.4)
48" (1219.2)	50 5/8" (1285.9)	44 3/8" (1127.1)	91" (2311.4)	84" (2134)	102 1/4" (2597.2)
50 7/8" (1292.2)	53 1/2" (1358.9)	47 1/4" (1200.2)	91" (2311.4)	84" (2134)	108" (2743.2)
KEY	C+2 5/8" C+(66.7)"	C-3 5/8" C-(92.1)"	ROH+7" ROH+(177.8)"	OFH-7" OFH-(177.8)"	2C+6 1/4" 2C+(158.8)"

OFW NOTE: CONSULT FACTORY FOR EXTENDED HEADERS.

STD. GLASS SIZE KEY*	WIDTH	C-2 1/4" C-(57.2)"
	HEIGHT	(OFH)-15 7/8" (OFH)-(403.2)"

* NARROW STILE RAILS W/ 1/4" GUTTER, NO MUTTINS BASED ON MASONRY OPENING



DWG NO. 1012493

DRN BY CLW DATE 3/7/14 CHK BY SS DATE 3/7/14 REV 4.0 DATE 01/19/22

ASSA ABLOY