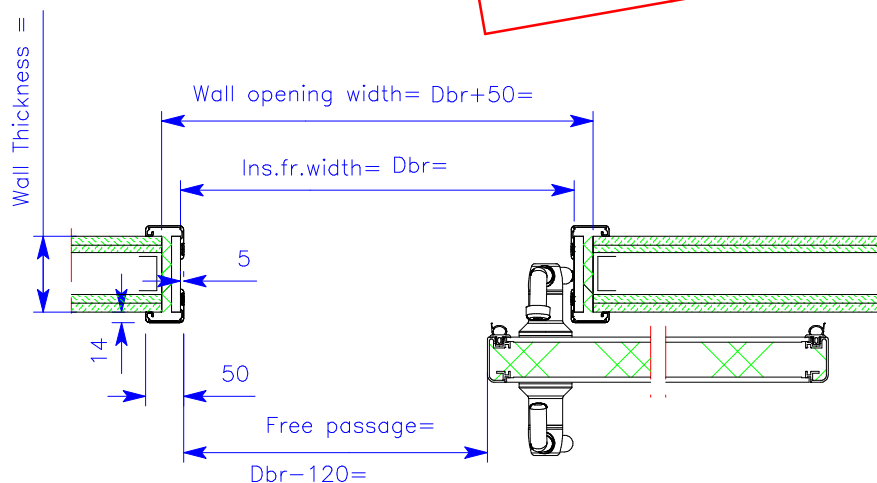


Din Right
Mark:
Quantity:

Approved by:	
Initials:	Date:



Remarks:

- Current:** 230V / 50Hz socket 1P+1N+RA (by others)
- Conduits:** 5/8" conduits for electrical wiring (by others)
- Wiring:** 4 x 0,34 mm², shielded cables, 2m overlength (by others)
- Isolators:** For current, switches and safeties delivered and mounted by others.
- Floor:** -Floor must be level.
-No corner profile in sliding space

A: Switches
B: Socket (current)
C: Optional functions



Metaflex Doors Europe
PO Box 300, 7120 AH Aalten
The Netherlands
Tel. +31(0) 88 - 1414900
www.metaflex.nl

Rev.:	Modification:	Date:	Drawn:	Checked:
Projektion	Scale: nvt	Drawn: Jan.O.	Work: Metaflex Aalten	
	Dimension: mm	Checked: -		
	Date: 16-08-2016	Project: -		
We explicitly reserve all rights regarding our designs, drawings and other products, as well as intellectual property rights if applicable.				
Discription: MF5 Medicare aut				Size:
Belongs to: -		Drg.no.: 40550S4R-212	rev. 00	A4